



LINEA SEDUTE  
HIGH LEVEL  
2023

KIT UFFICIO SNC  
Via Treviso, 92 - 30037 Scorzè (VE)  
Tel. 041 5840160 - Fax. 041 5840835  
[info@kitufficio.it](mailto:info@kitufficio.it)

# INDEX



# 06 ATTESA LOUNGE

- 08 **IKEBANA**
- 16 **DOMINO**
- 24 **ITACA**
- 28 **ITACA ACOUSTIC**
- 32 **TRES**
- 40 **FORMAT**
- 48 **MANTRA**
- 56 **DEXTER**
- 60 **CUBE PLUS**
- 64 **ONDA**
- 70 **MONET**
- 76 **DAMATRÀ**
- 82 **HALL**
- 84 **ROUND**
- 92 **BLITZ**
- 98 **MIMI**
- 104 **ZIP**

# 108 TAVOLI TABLES

110/117

# 118 DIREZIONALI EXECUTIVE

- 120 **METROPOLITAN**
- 128 **MAXIMA**
- 136 **HAIKU**  
*HAIKU WOOD*
- 144 **ADMIRAL**
- 150 **OMNIA**
- 156 **SHINE**
- 162 **SYNCRONET**
- 166 **TAIT**
- 172 **PROGRESS**
- 176 **SELECTA**
- 178 **SADIA**
- 180 **SADIA PLUS**

# 182 OPERATIVE TASK CHAIRS

- 184 **MIRAI**
- 187 **MIRAI 24**
- 188 **MIRAI WHITE**
- 192 **JEX**
- 198 **PIPER**
- 204 **TECNA**
- 208 **KALISTA**

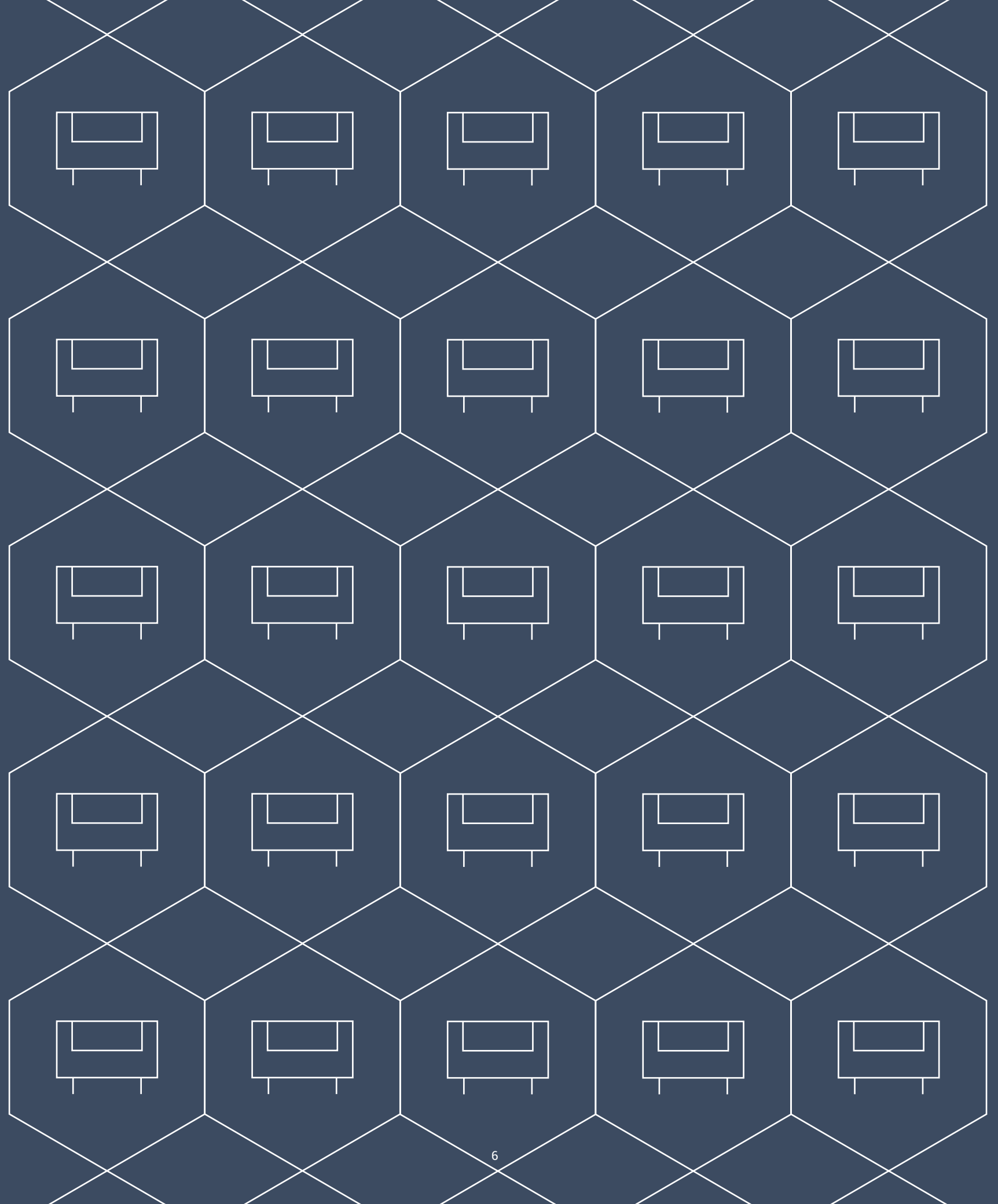
# 212 SEDIE E COLLETIVITÀ GUEST AND STACKING CHAIRS

- 214 **HOST**
- 220 **CARPET**  
*CARPET WOOD*
- 226 **JAMILA**
- 232 **KAYLA**
- 238 **KUBIKA**
- 242 **KLIC**
- 246 **TEOREMA**
- 252 **SLIM**
- 254 **PASSPORT**

# 258 SGABELLI STOOLS

- 260 **UPPER**
- 268 **HOST**
- 270 **CARPET**  
*CARPET WOOD*
- 271 **KUBIKA**

# 278 RIVESTIMENTI TEXTILES AND LEATHERS





# ATTESA

LOUNGE



# IKEBANA

## ATTESA

DESIGN: EDI & PAOLO CIANI DESIGN

Destinazione/Location

<b>SALA ATTESA</b>	<b>LOUNGE</b>
WAITING ROOM	LOUNGE























Emplacement/Ubicación

<b>SALLE D'ATTENTE</b>	<b>LOUNGE</b>
SALA DE ESPERA	LOUNGE







# DOMINO

ATTESA



Destinazione/Location

<b>SALA ATTESA</b>	<b>LOUNGE</b>
WAITING ROOM	LOUNGE

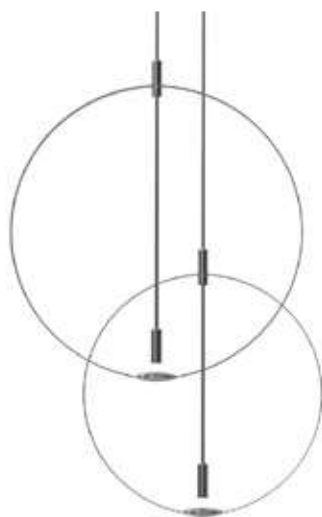










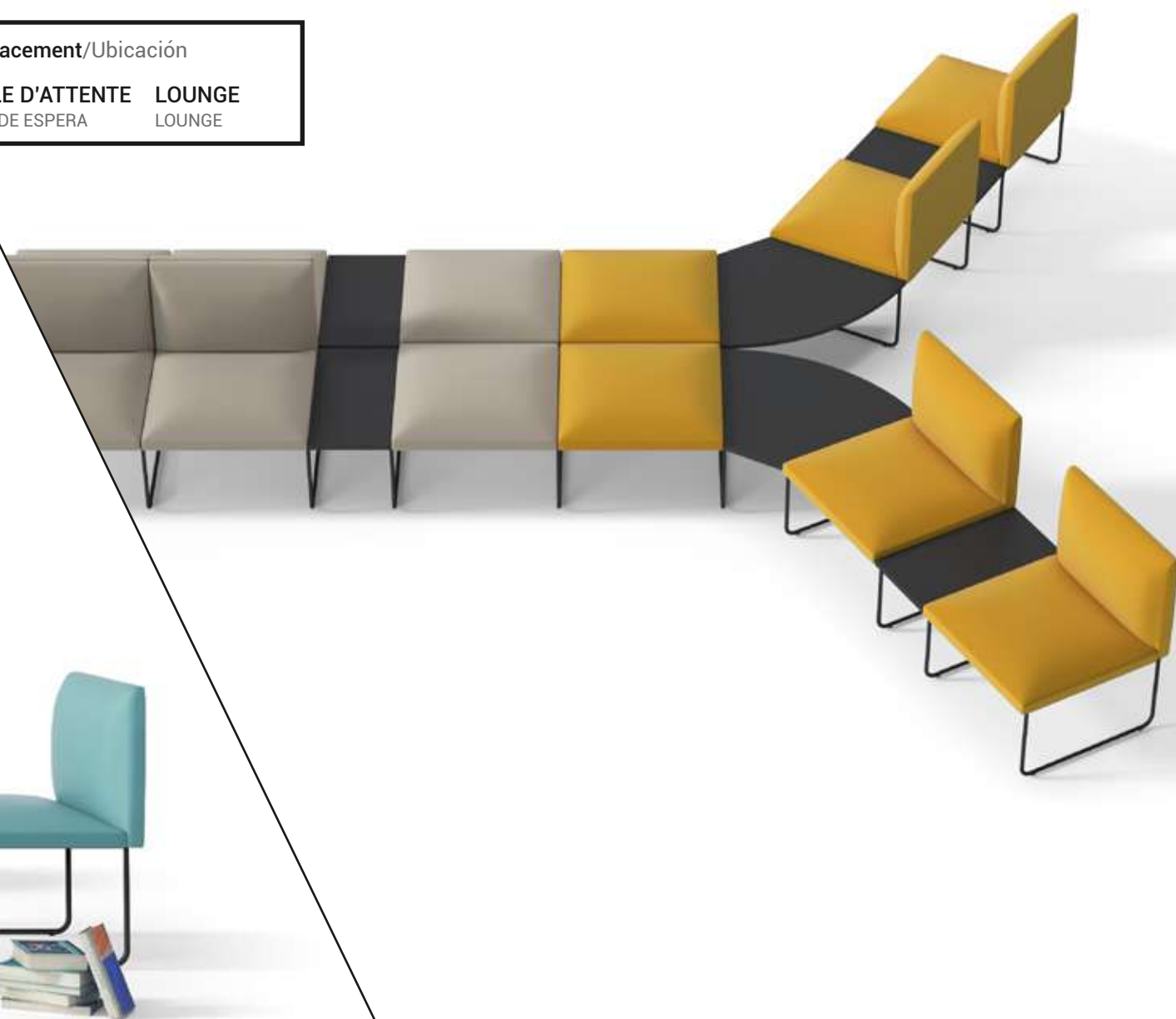


Emplacement/Ubicación

**SALLE D'ATTENTE** **LOUNGE**

SALA DE ESPERA

LOUNGE











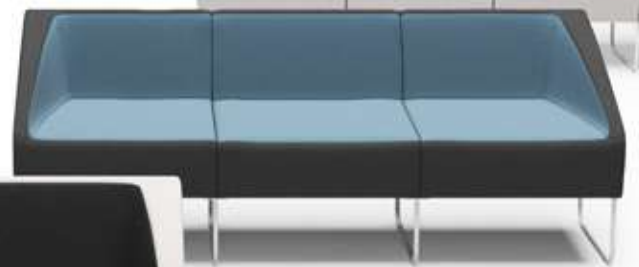




# ITACA

## ATTESA

DESIGN: STUDIO OMEGA



Destinazione/Location

<b>SALA ATTESA</b>	<b>LOUNGE</b>
WAITING ROOM	LOUNGE

















**Emplacement/Ubicación**

**SALLE D'ATTENTE**

SALA DE ESPERA

**LOUNGE**

LOUNGE









# TRES

## ATTESA

DESIGN: NICOLA CACCO

Destinazione/Location/Emplacement/Ubicación

<b>CASA</b>	<b>SALA RIUNIONI</b>
HOME	BOARDROOM
MAISON	SALLE DE REUNION
CASA	SALA DE REUNIONES













TRES







**Destinazione/Location/Emplacement/Ubicación**  
**SALA ATTESA**      **LOUNGE**  
WAITING ROOM      LOUNGE  
SALLE D'ATTENTE      LOUNGE  
SALA DE ESPERA      LOUNGE





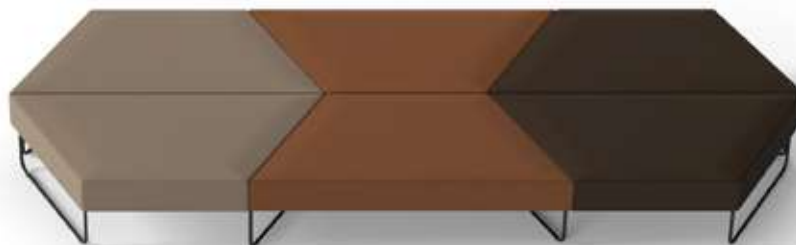


# FORMAT

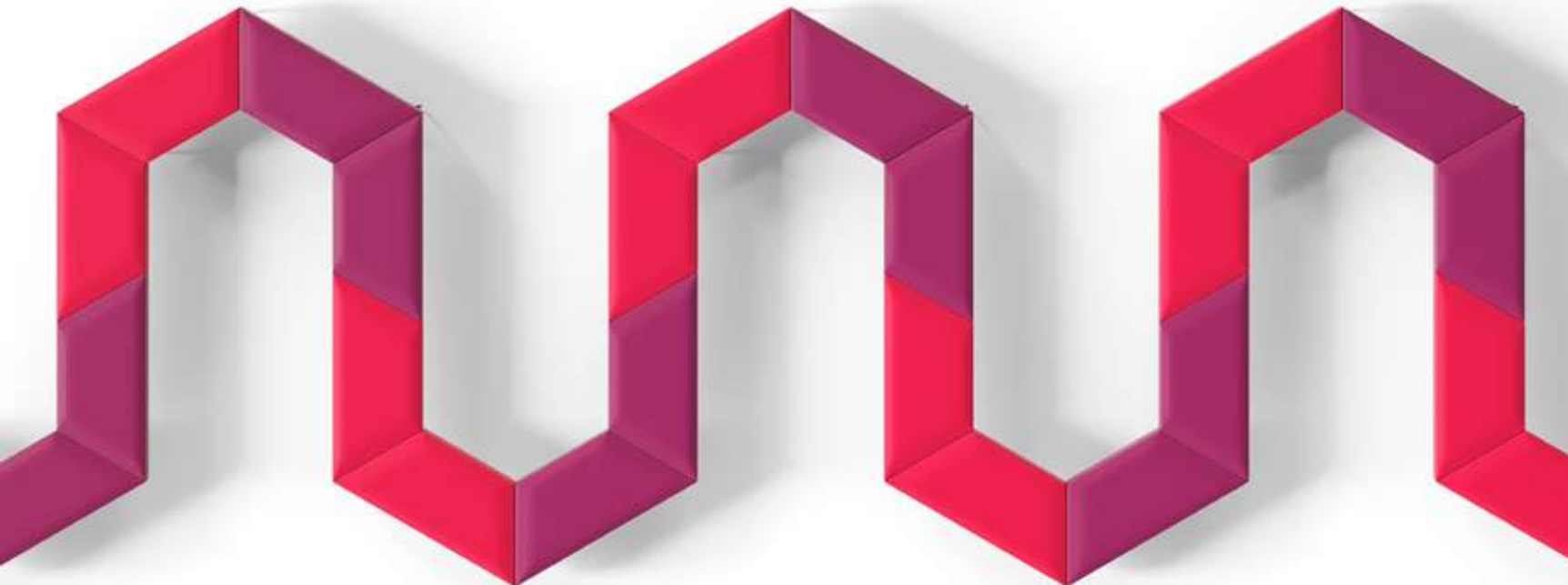
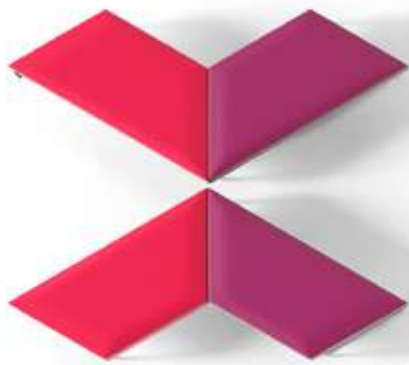
ATTESA

Destinazione/Location/Emplacement/Ubicación

<b>SALA ATTESA</b>	<b>LOUNGE</b>
WAITING ROOM	LOUNGE
SALLE D'ATTENTE	LOUNGE
SALA DE ESPERA	LOUNGE

















Destinazione/Location/Emplacement/Ubicación

<b>CASA</b>	<b>BIBLIOTECA</b>
HOME	LIBRARY
MAISON	BIBLIOTHEQUE
CASA	BIBLIOTECA





# MANTRA

## ATTESA

DESIGN: NICOLA CACCO

Destinazione/Location/Emplacement/Ubicación

<b>CASA</b>	<b>CAFFETTERIA</b>
HOME	CAFETERIA
MAISON	CAFETERIE
CASA	CAFETERIA







MANTRA

27  
75

The Museum of Natural History University of Florence, was founded in 1775 by Grand Duke Peter Leopold. Although the botanical garden dates back to 1545, with its a million specimens, it is the most important naturalistic museum in Italy and one of the greatest in the world. Consisting of six sections located in one of the world's most beautiful historical cities, the Museum houses specimens of extraordinary scientific and naturalistic value from the XVI century herbaria to the visible XVII century waxen, from the fossil elephant skeletons to the collections of brightly coloured butterflies, from the huge fossilised crystals to the artistic artefacts, from the imposing wooden sculptures to the world's largest flower. A content that ... (artwork) ... contains natural history, science (art) (art).

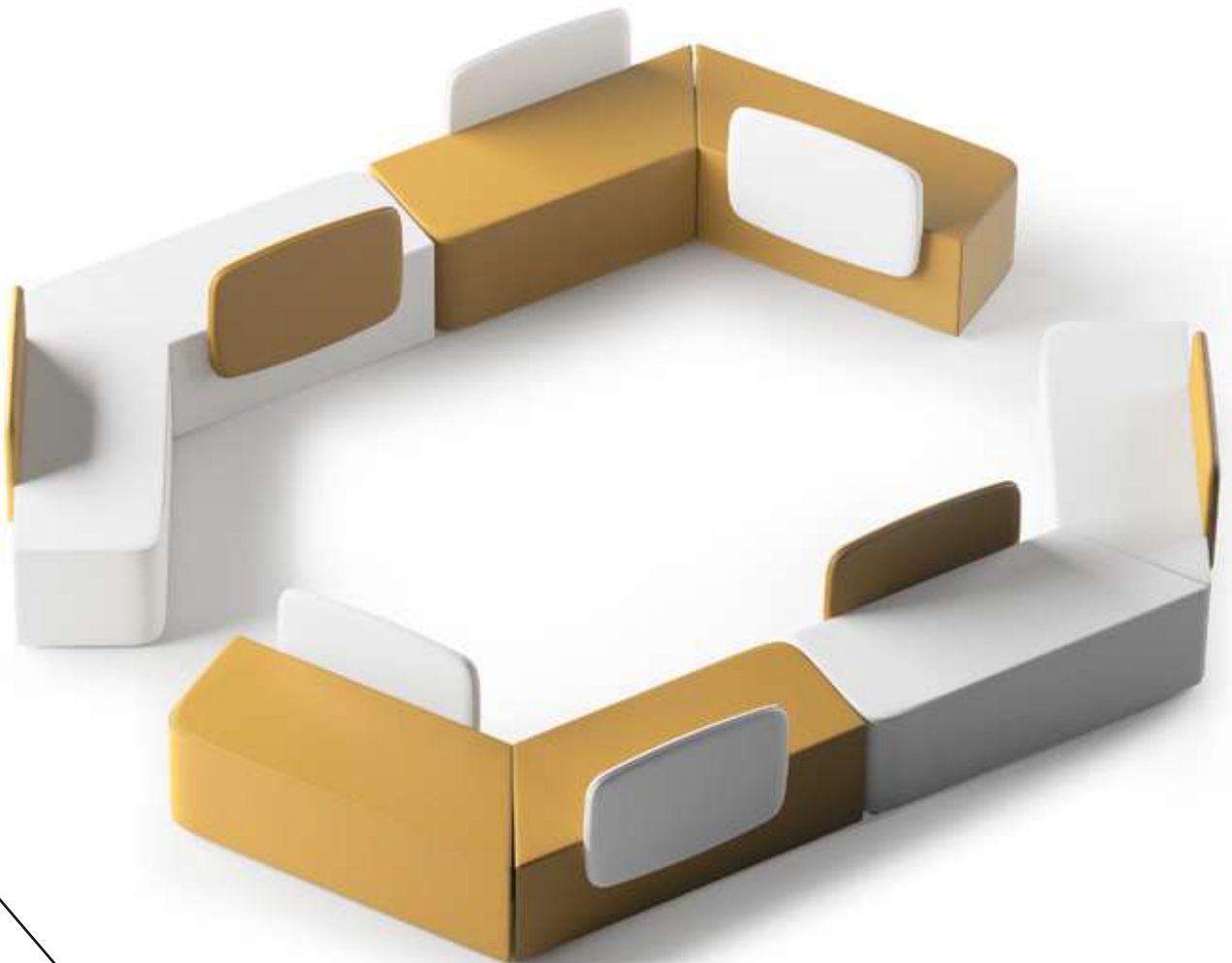
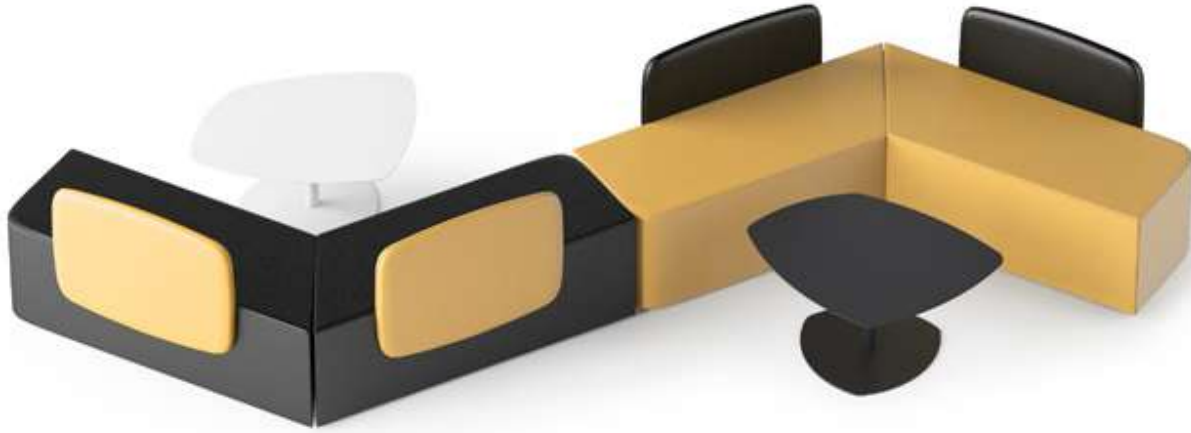




Destinazione/Location/Emplacement/Ubicación

<b>SALA ATTESA</b>	<b>LOUNGE</b>
WAITING ROOM	LOUNGE
SALLE D'ATTENTE	LOUNGE
SALA DE ESPERA	LOUNGE









# DEXTER

ATTESA



Destinazione/Location

<b>CASA</b>	<b>SALA ATTESA</b>	<b>LOUNGE</b>
HOME	WAITING ROOM	LOUNGE







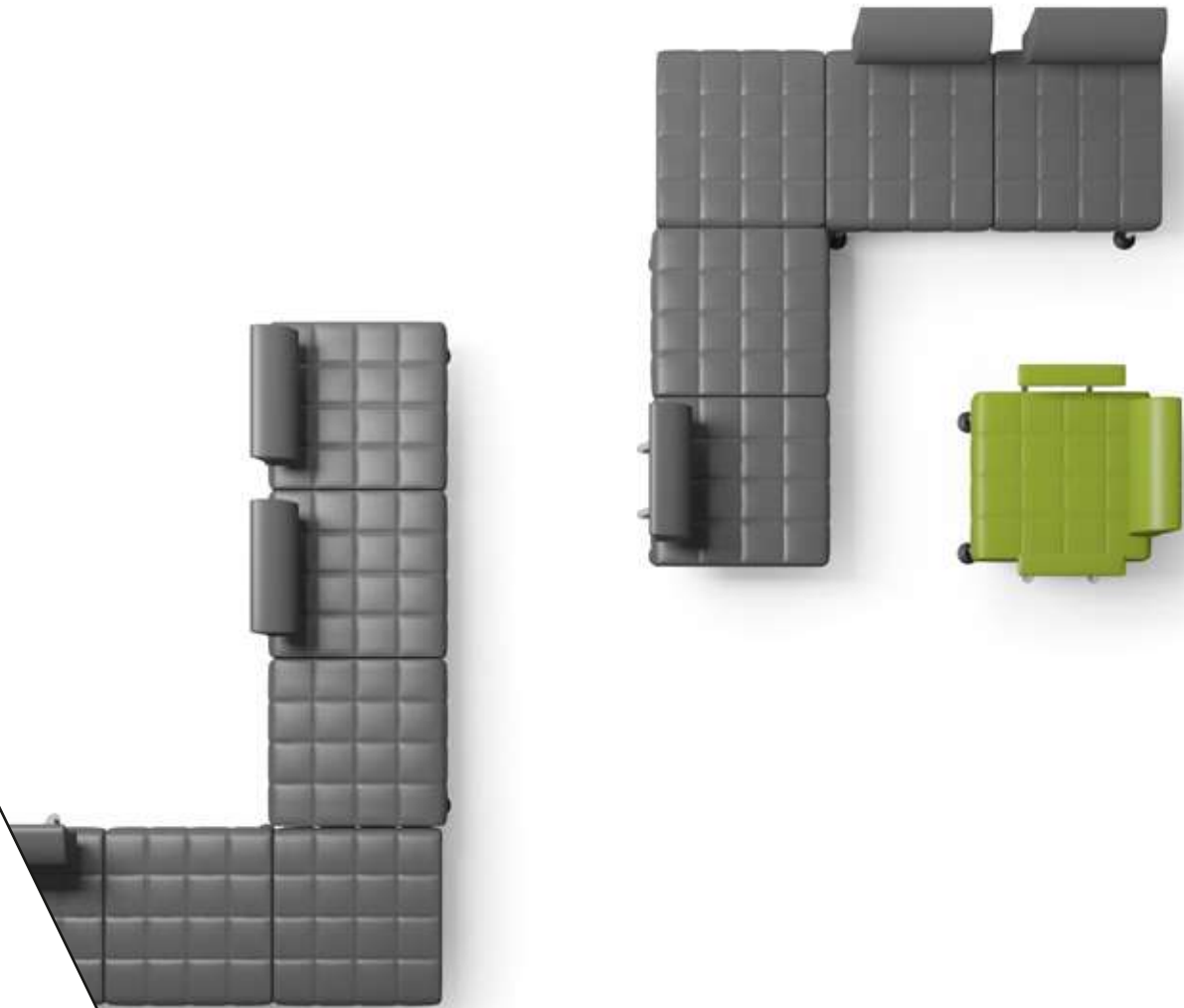
**Emplacement/Ubicación**

<b>MAISON</b>	<b>SALLE D'ATTENTE</b>	<b>LOUNGE</b>
CASA	SALA DE ESPERA	LOUNGE



# CUBE PLUS

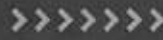
## ATTESA



Destinazione/Location/Emplacement/Ubicación

<b>SALA ATTESA</b>	<b>LOUNGE</b>
WAITING ROOM	LOUNGE
SALLE D'ATTENTE	LOUNGE
SALA DE ESPERA	LOUNGE









I R

RENOIR



# ONDA

ATTESA

Destinazione/Location

<b>CASA</b>	<b>SALA ATTESA</b>	<b>LOUNGE</b>
HOME	WAITING ROOM	LOUNGE





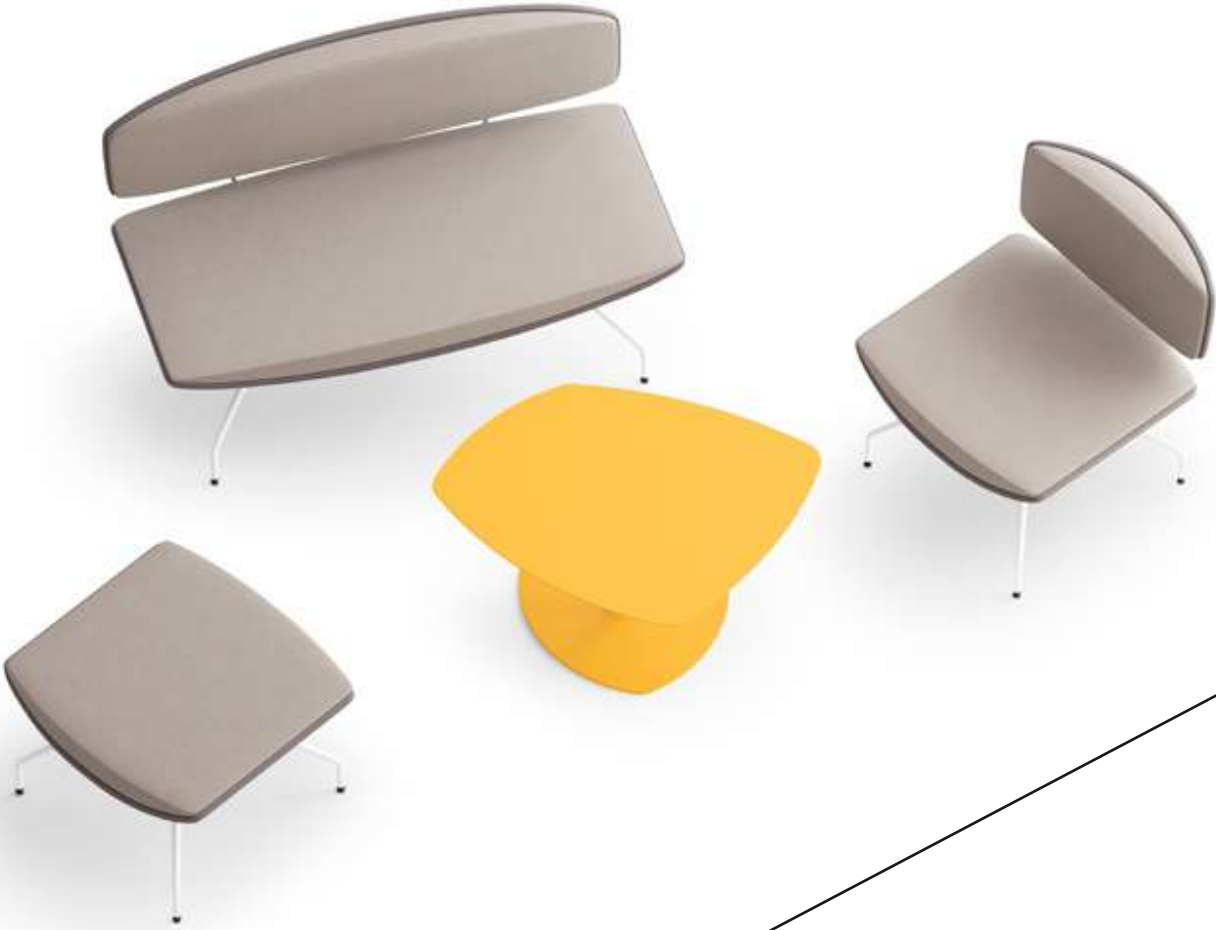


RENOI









Emplacement/Ubicación		
<b>MAISON</b>	<b>SALLE D'ATTENTE</b>	<b>LOUNGE</b>
CASA	SALA DE ESPERA	LOUNGE





# MONET

ATTESA



**Destinazione/Location**

<b>CASA</b>	<b>SALA ATTESA</b>	<b>LOUNGE</b>
HOME	WAITING ROOM	LOUNGE











**Emplacement/Ubicación**

<b>MAISON</b>	<b>SALLE D'ATTENTE</b>	<b>LOUNGE</b>
CASA	SALA DE ESPERA	LOUNGE







# DAMATRÀ

ATTESA

Destinazione/Location

<b>CASA</b>	<b>SALA ATTESA</b>	<b>LOUNGE</b>
HOME	WAITING ROOM	LOUNGE









Emplacement/Ubicación

<b>MAISON</b>	<b>SALLE D'ATTENTE</b>	<b>LOUNGE</b>
CASA	SALA DE ESPERA	LOUNGE









# HALL

## ATTESA



Destinazione/Location/Emplacement/Ubicación

<b>CASA</b>	<b>SALA ATTESA</b>	<b>LOUNGE</b>
HOME	WAITING ROOM	LOUNGE
MAISON	SALLE D'ATTENTE	LOUNGE
CASA	SALA DE ESPERA	LOUNGE



# ROUND

## ATTESA

Destinazione/Location/Emplacement/Ubicación

<b>CASA</b>	<b>SALA ATTESA</b>	<b>LOUNGE</b>
HOME	WAITING ROOM	LOUNGE
MAISON	SALLE D'ATTENTE	LOUNGE
CASA	SALA DE ESPERA	LOUNGE











Destinazione/Location/Emplacement/Ubicación

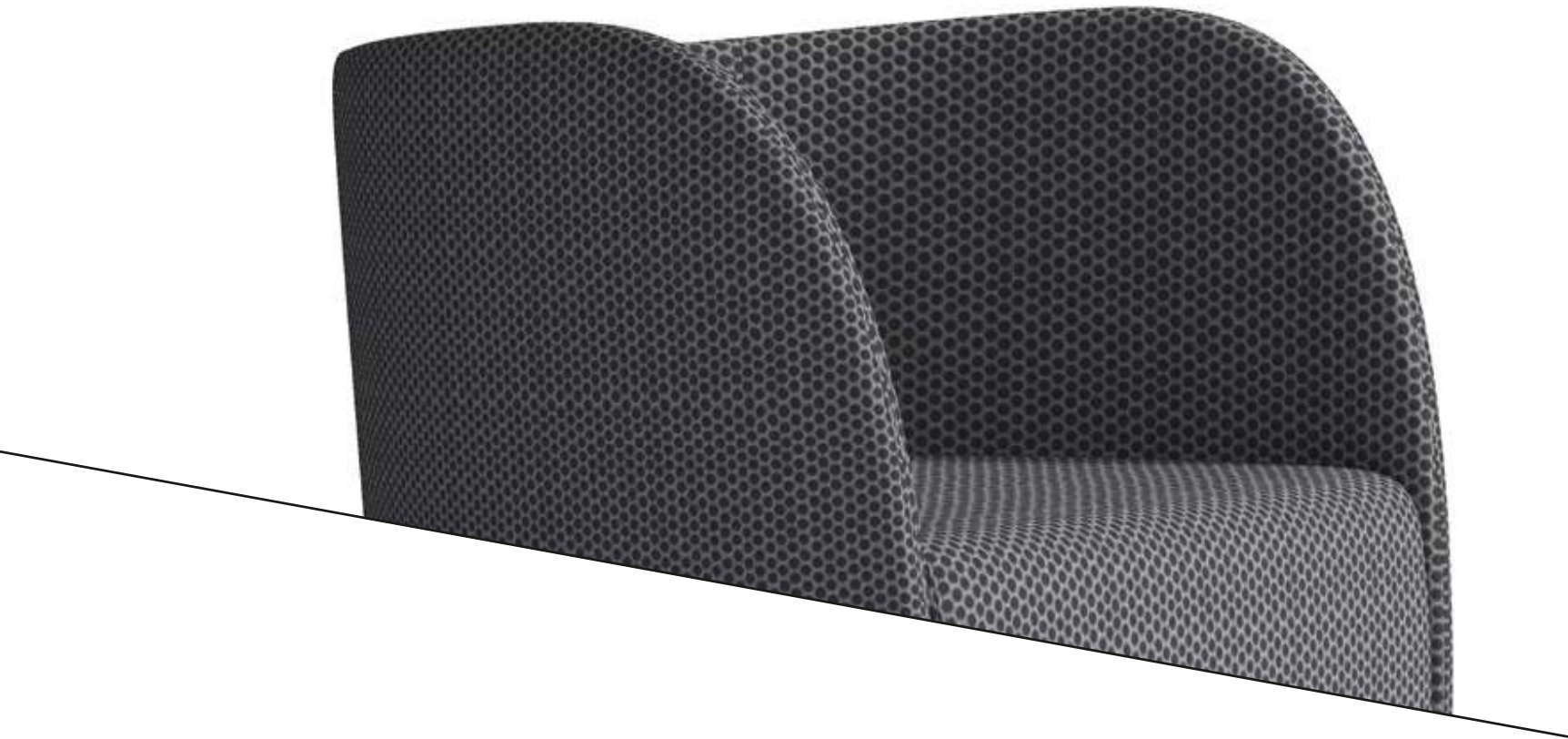
**SALA RIUNIONI**  
BOARDROOM  
SALLE DE REUNION  
SALA DE REUNIONES

**CAFFETTERIA**  
CAFETERIA  
CAFETERIE  
CAFETERIA

**BIBLIOTECA**  
LIBRARY  
BIBLIOTHEQUE  
BIBLIOTECA















# BLITZ

ATTESA

Destinazione/Location/Emplacement/Ubicación

<b>CASA</b>	<b>SALA ATTESA</b>	<b>LOUNGE</b>
HOME	WAITING ROOM	LOUNGE
MAISON	SALLE D'ATTENTE	LOUNGE
CASA	SALA DE ESPERA	LOUNGE













Destinazione/Location/Emplacement/Ubicación

<b>SALA RIUNIONI</b>	<b>CAFFETERIA</b>	<b>BIBLIOTECA</b>
BOARDROOM	CAFETERIA	LIBRARY
SALLE DE REUNION	CAFETERIE	BIBLIOTHEQUE
SALA DE REUNIONES	CAFETERIA	BIBLIOTECA







# MIMI

ATTESA

Destinazione/Location/Emplacement/Ubicación

<b>CASA</b>	<b>CAFFETERIA</b>	<b>SALA ATTESA</b>
HOME	CAFETERIA	WAITING ROOM
MAISON	CAFETERIE	SALLE D'ATTENTE
CASA	CAFETERIA	SALA DE ESPERA











# Life.\*

Available for a limited time only. Limit one (1) per person. Subject to change without notice. Provided "as is" and without any warranties, representations and/or the sole responsibility of the retailer. May incur charges during non-use of device. Additional party will require the appropriate key fob and applicable fees and taxes. Terms and conditions apply. Offer restrictions apply.



Destinazione/Location/Emplacement/Ubicación

**SALA RIUNIONI**

BOARDROOM  
SALLE DE REUNION  
SALA DE REUNIONES

**UFFICIO**

OFFICE  
BUREAU  
OFICINAS







# ZIP

ATTESA



Destinazione/Location/Emplacement/Ubicación

**SALA RIUNIONI**

BOARDROOM  
SALLE DE REUNION  
SALA DE REUNIONES

**SALA CONFERENZA**

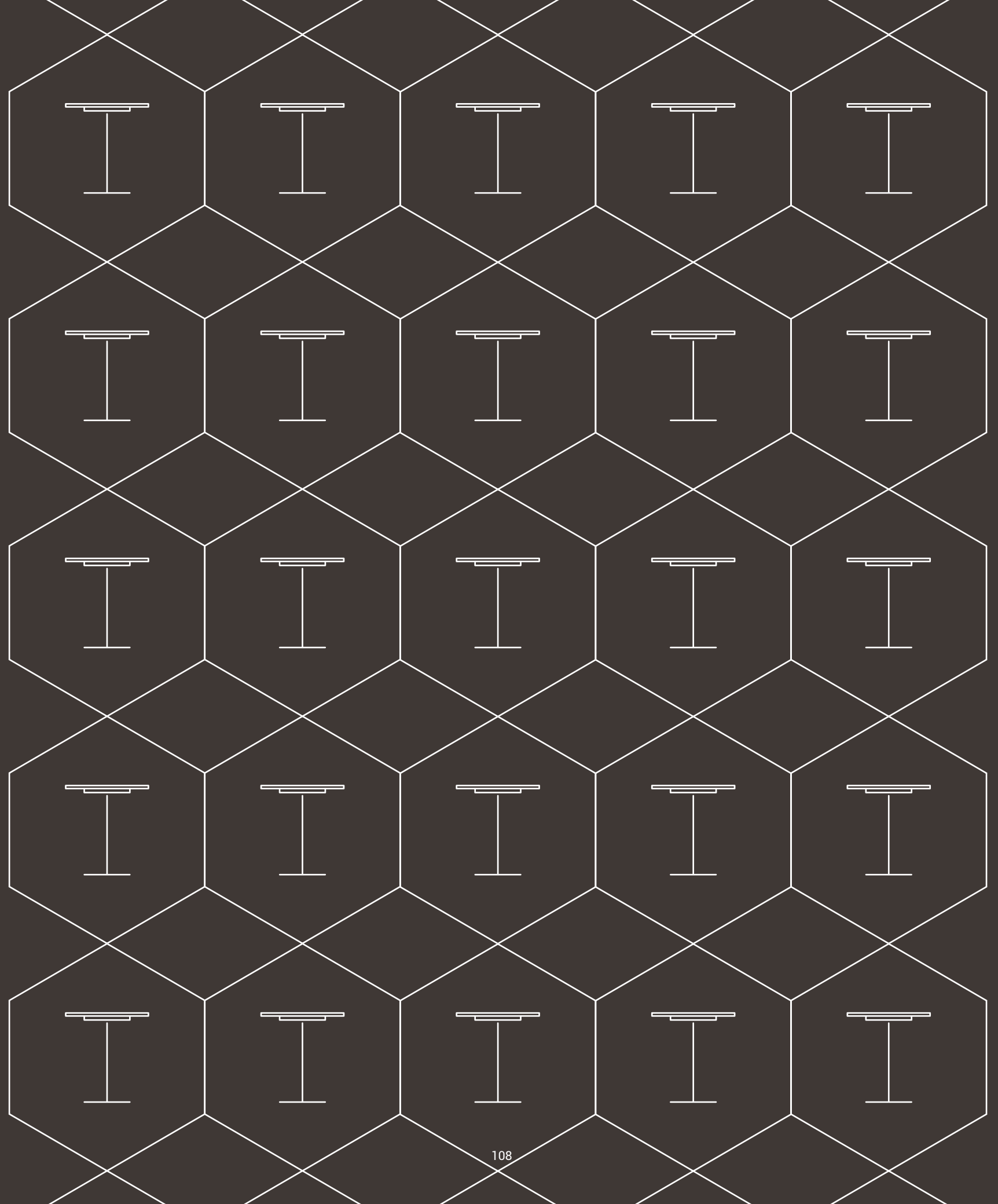
CONFERENCE ROOM  
SALLE DE CONFERENCE  
SALA DE CONFERENCIAS











# TAVOLI

TABLES





DESIGN: NICOLA CACCO

Destinazione/Location/Emplacement/Ubicación

<b>CASA</b>	<b>CAFFETERIA</b>	<b>BIBLIOTECA</b>
HOME	CAFETERIA	LIBRARY
MAISON	CAFETERIE	BIBLIOTHEQUE
CASA	CAFETERIA	BIBLIOTECA

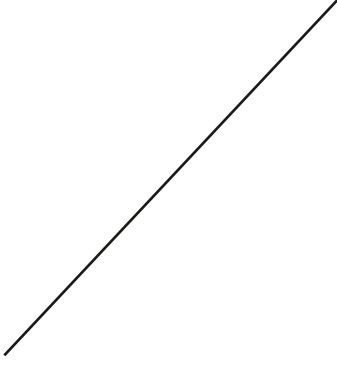
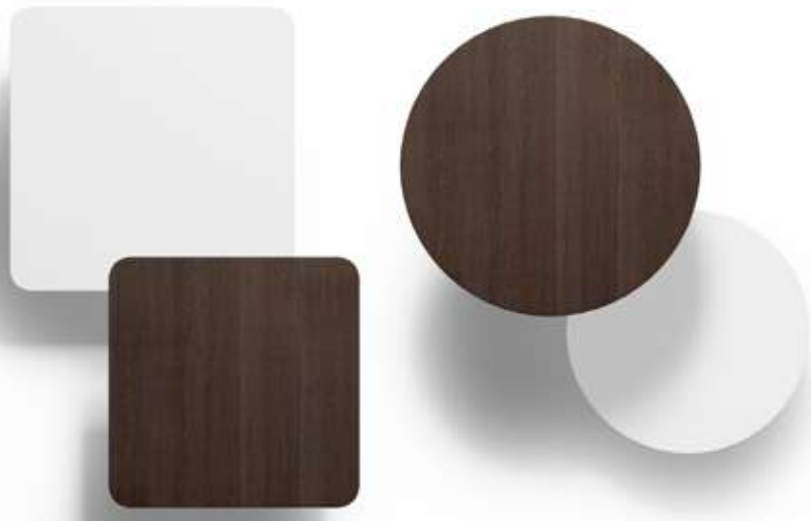












**Destinazione/Location/Emplacement/Ubicación**  
**SALA ATTESA**    **LOUNGE**  
WAITING ROOM    LOUNGE  
SALLE D'ATTENTE    LOUNGE  
SALA DE ESPERA    LOUNGE







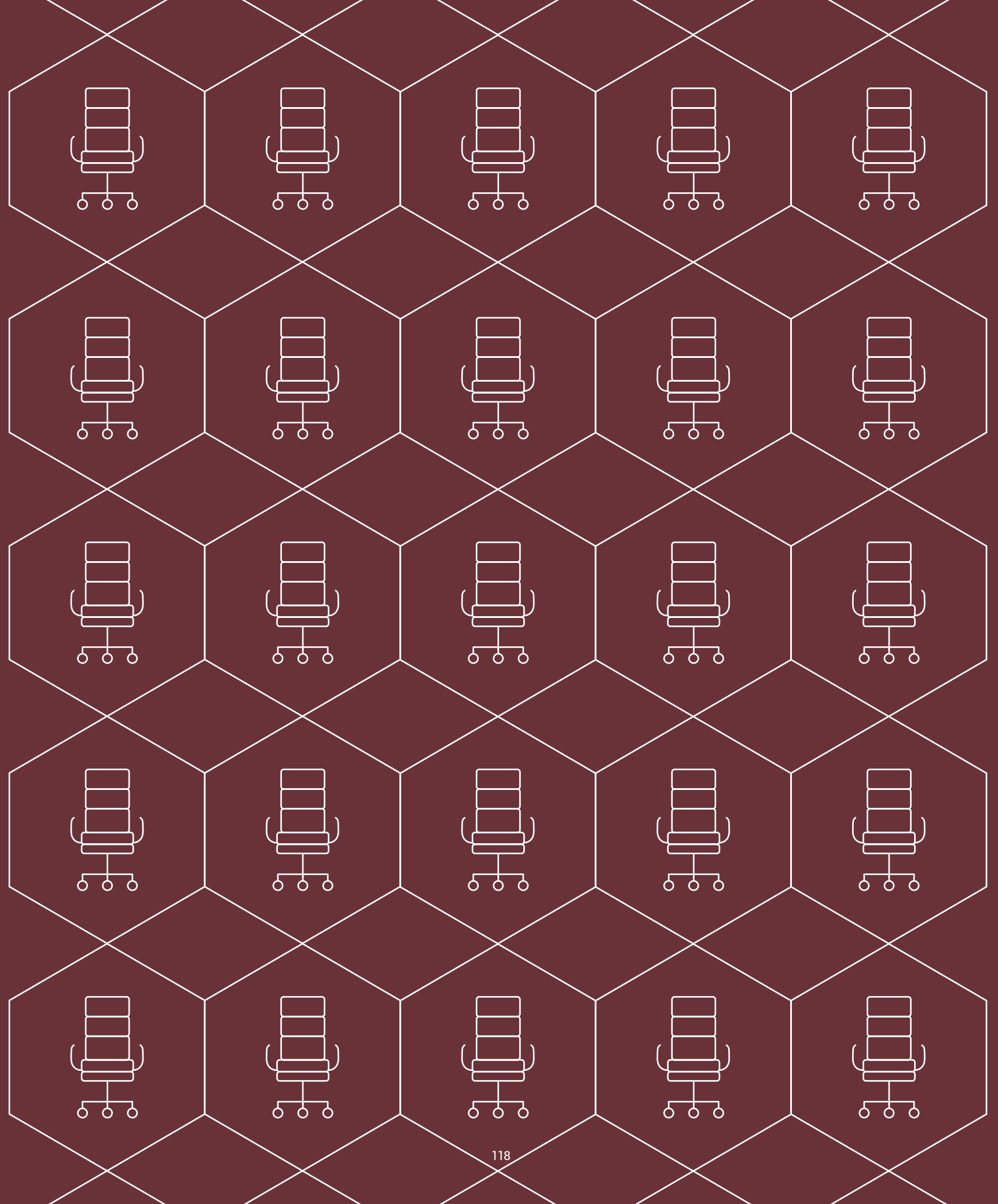
DESIGN: EDI &amp; PAOLO CIANI DESIGN



Destinazione/Location/Emplacement/Ubicación

CASA	SALA ATTESA	LOUNGE
HOME	WAITING ROOM	LOUNGE
MAISON	SALLE D'ATTENTE	LOUNGE
CASA	SALA DE ESPERA	LOUNGE







# DIREZIONALI

EXECUTIVE



# METROPOLITAN

## DIREZIONALI

DESIGN: EDI & PAOLO CIANI DESIGN

Destinazione/Location/Emplacement/Ubicación

<b>CASA</b>	<b>SALA RIUNIONI</b>
HOME	BOARDROOM
MAISON	SALLE DE REUNION
CASA	SALA DE REUNIONES







Destinazione/Location/Emplacement/Ubicación

<b>UFFICIO</b>	<b>LOUNGE</b>
OFFICE	LOUNGE
BUREAU	LOUNGE
OFICINAS	LOUNGE



















# MAXIMA

## DIREZIONALI

Destinazione/Location/Emplacement/Ubicación

**CASA**  
HOME  
MAISON  
CASA

**SALA RIUNIONI**  
BOARDROOM  
SALLE DE REUNION  
SALA DE REUNIONES















**Destinazione/Location/Emplacement/Ubicación**

<b>SALA ATTESA</b>	<b>UFFICIO</b>	<b>LOUNGE</b>
WAITING ROOM	OFFICE	LOUNGE
SALLE D'ATTENTE	BUREAU	LOUNGE
SALA DE ESPERA	OFICINAS	LOUNGE











# HAIKU

## DIREZIONALI

Destinazione/Location/Emplacement/Ubicación

<b>CASA</b>	<b>SALA RIUNIONI</b>
HOME	BOARDROOM
MAISON	SALLE DE REUNION
CASA	SALA DE REUNIONES







**Destinazione/Location/Emplacement/Ubicación**

<b>UFFICIO</b>	<b>LOUNGE</b>
OFFICE	LOUNGE
BUREAU	LOUNGE
OFICINAS	LOUNGE















# ADMIRAL

## DIREZIONALI

Destinazione/Location

**SALA RIUNIONI**

BOARDROOM

**UFFICIO**

OFFICE















**Emplacement/Ubicación**

**SALLE DE REUNION**  
SALA DE REUNIONES

**BUREAU**  
OFICINAS





# OMNIA

DIREZIONALI

Destinazione/Location

**SALA RIUNIONI**  
BOARDROOM

**UFFICIO**  
OFFICE









**Emplacement/Ubicación**

**SALLE DE REUNION**

SALA DE REUNIONES

**BUREAU**

OFICINAS









# SHINE

DIREZIONALI

Destinazione/Location

UFFICIO  
OFFICE

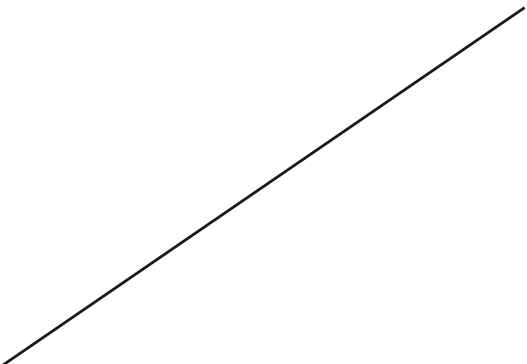






Emplacement/Ubicación

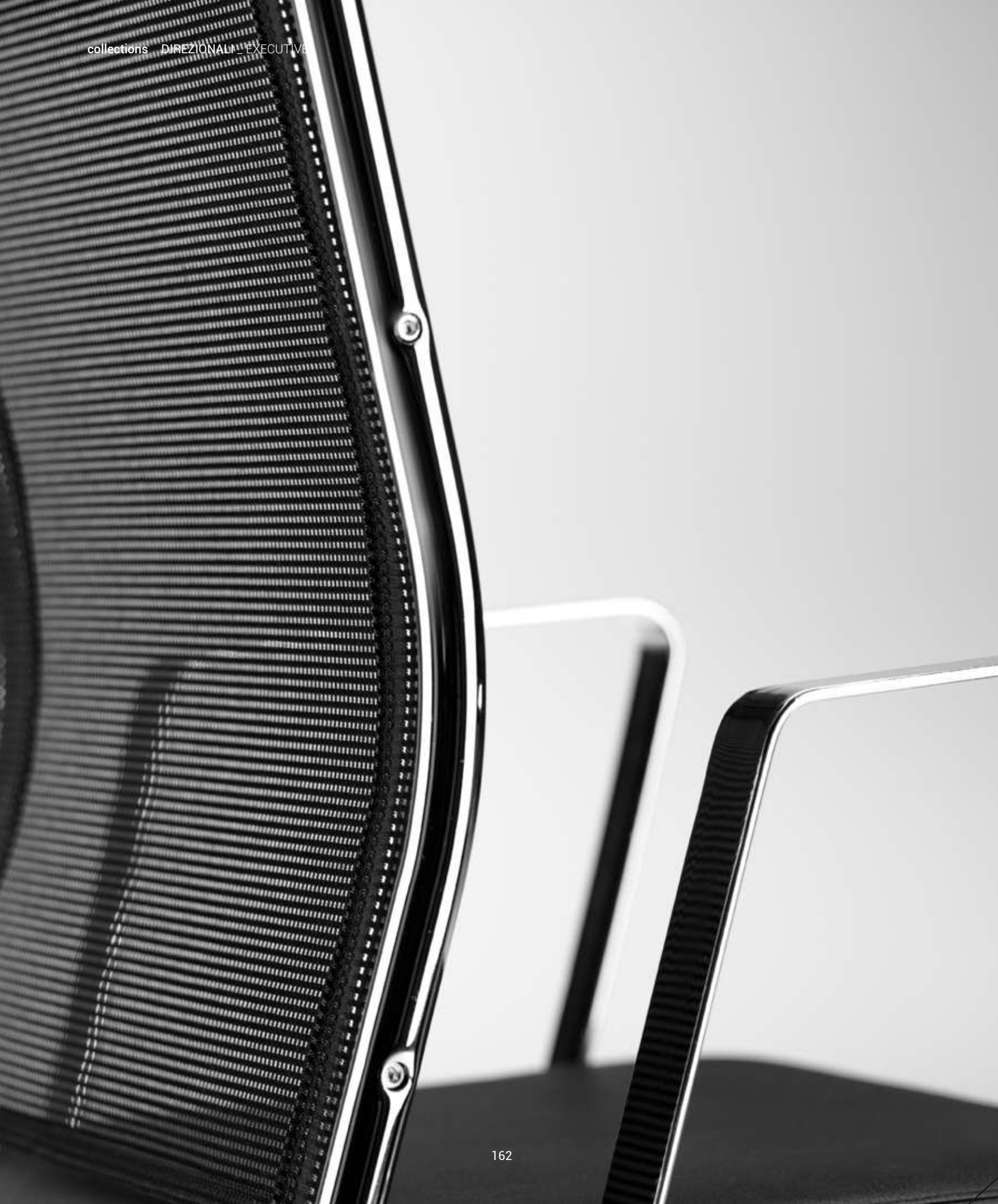
**BUREAU**  
OFICINAS











# SYNCRONET

DIREZIONALI

Destinazione/Location

SALA RIUNIONI  
BOARDROOM

UFFICIO  
OFFICE







**Emplacement/Ubicación**

**SALLE DE REUNION**  
SALA DE REUNIONES

**BUREAU**  
OFICINAS







# TAIT

## DIREZIONALI

Destinazione/Location

**SALA RIUNIONI**  
BOARDROOM

**UFFICIO**  
OFFICE











**Emplacement/Ubicación**

**SALLE DE REUNION**  
SALA DE REUNIONES

**BUREAU**  
OFICINAS







# PROGRESS

DIREZIONALI



Destinazione/Location

**SALA RIUNIONI**  
BOARDROOM

**UFFICIO**  
OFFICE



Emplacement/Ubicación

SALLE DE REUNION  
SALA DE REUNIONES

BUREAU  
OFICINAS







# SELECTA

## DIREZIONALI



Destinazione/Location/Emplacement/Ubicación

**SALA RIUNIONI**  
BOARDROOM  
SALLE DE REUNION  
SALA DE REUNIONES

**UFFICIO**  
OFFICE  
BUREAU  
OFICINAS





# SADIA

## DIREZIONALI

Destinazione/Location

**SALA RIUNIONI**  
BOARDROOM

**UFFICIO**  
OFFICE





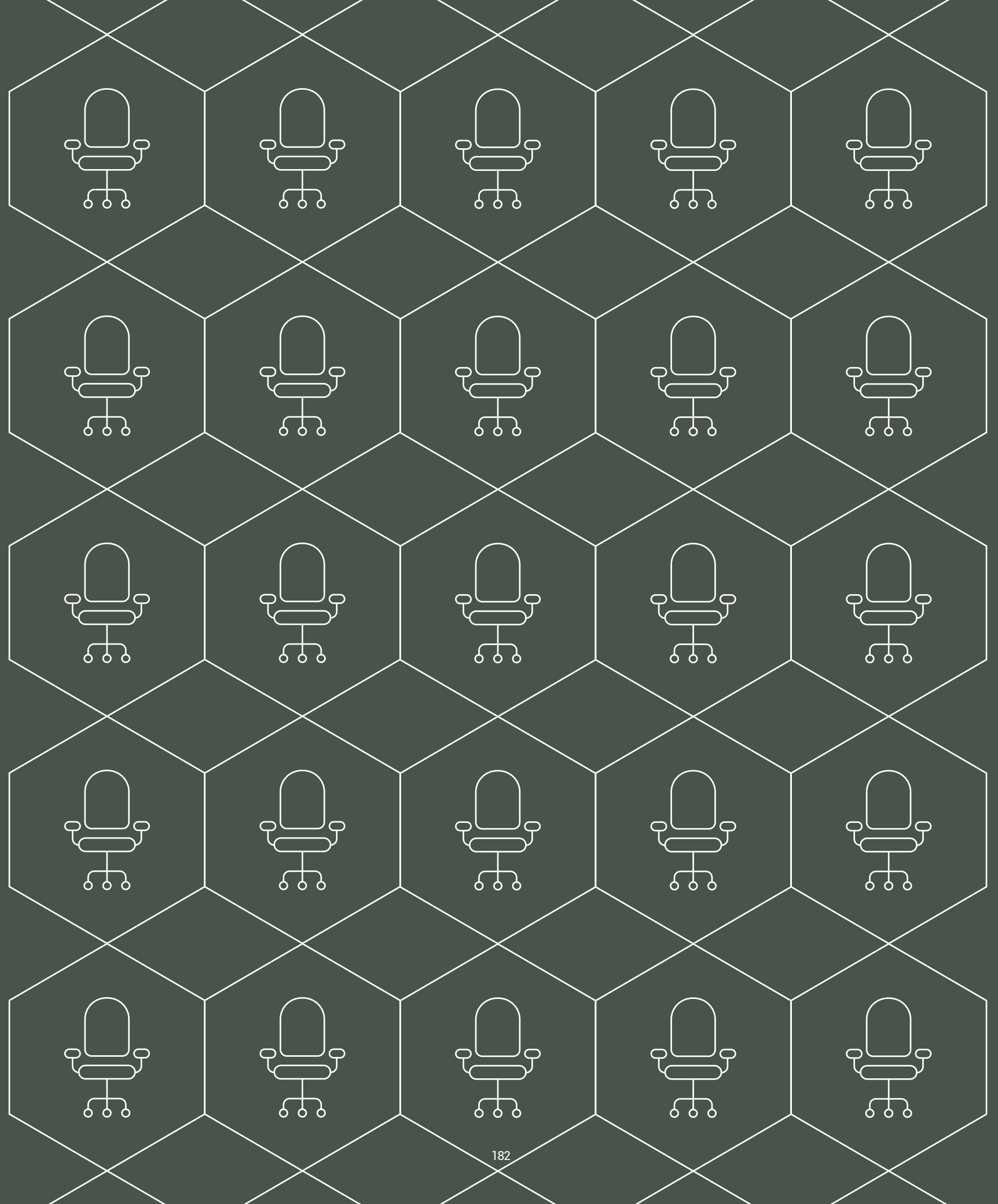




**Emplacement/Ubicación**

**SALLE DE REUNION**  
SALA DE REUNIONES

**BUREAU**  
OFICINAS



# OPERATIVE

TASK CHAIRS





# MIRAI

OPERATIVE

Destinazione/Location

**UFFICIO**  
OFFICE





















Emplacement/Ubicación

**BUREAU**  
OFICINAS







# JEX

OPERATIVE

Destinazione/Location

**UFFICIO**  
OFFICE











Emplacement/Ubicación

**BUREAU**  
OFICINAS





# PIPER

## OPERATIVE

Destinazione/Location

**UFFICIO**  
OFFICE











Emplacement/Ubicación

**BUREAU**  
OFICINAS







# TECNA

OPERATIVE





**Destinazione/Location/Emplacement/Ubicación**

<b>SALA RIUNIONI</b>	<b>UFFICIO</b>
BOARDROOM	OFFICE
SALLE DE REUNION	BUREAU
SALA DE REUNIONES	OFICINAS







# KALISTA

## OPERATIVE

Destinazione/Location/Emplacement/Ubicación

**UFFICIO**  
OFFICE  
BUREAU  
OFICINAS

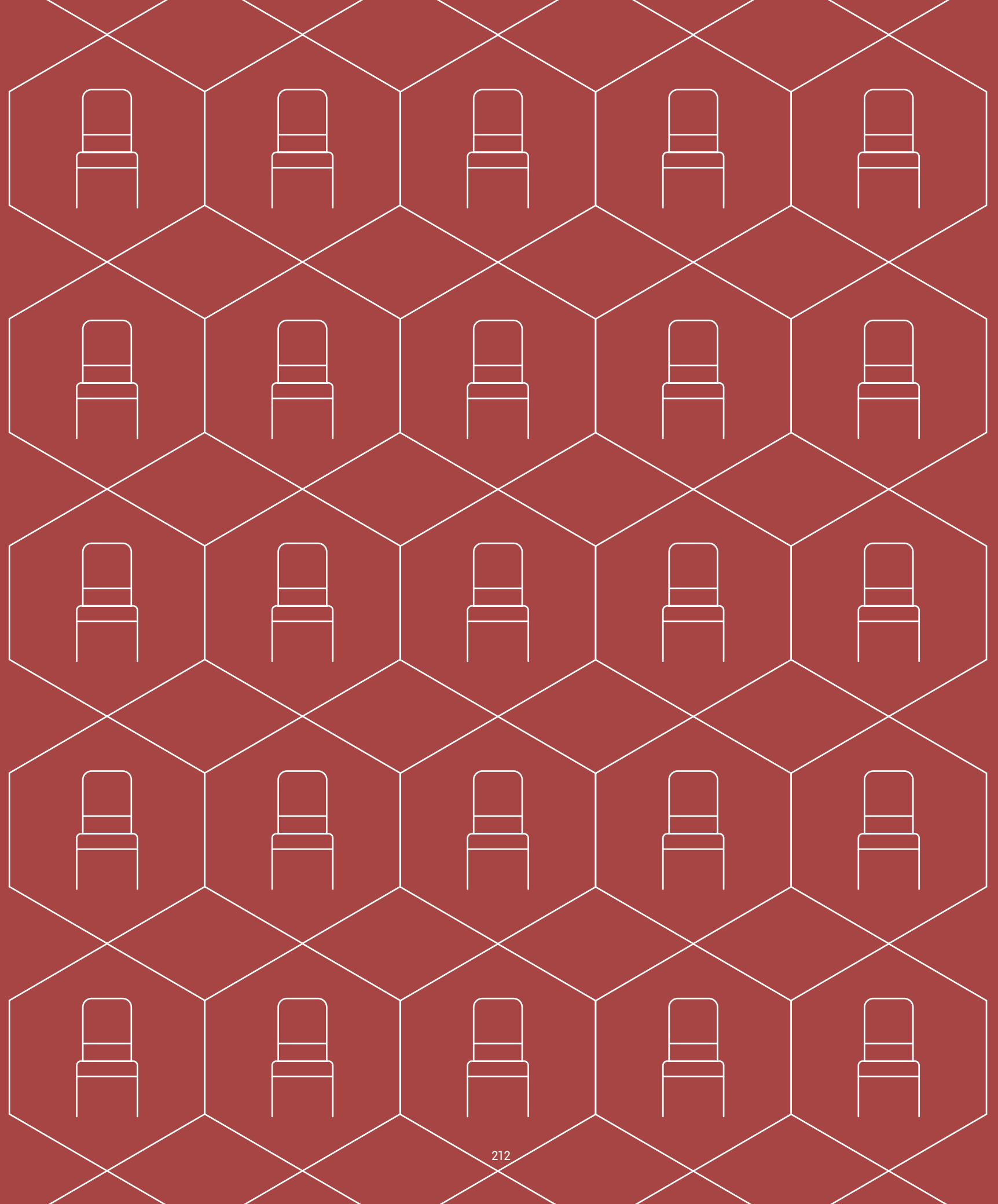












SEDIE E  
COLLETTIVITÀ  
GUEST AND STACKING CHAIRS



# HOST

## SEDIE E COLLETTIVITÀ

Destinazione/Location/Emplacement/Ubicación

<b>CASA</b>	<b>SALA RIUNIONI</b>
HOME	BOARDROOM
MAISON	SALLE DE REUNION
CASA	SALA DE REUNIONES















Destinazione/Location/Emplacement/Ubicación

<b>CAFFETTERIA</b>	<b>BIBLIOTECA</b>
CAFETERIA	LIBRARY
CAFETERIE	BIBLIOTHEQUE
CAFETERIA	BIBLIOTECA







# CARPET

## SEDIE E COLLETTIVITÀ

DESIGN: NICOLA CACCO



Destinazione/Location/Emplacement/Ubicación

<b>CASA</b>	<b>CAFFETERIA</b>	<b>SALA ATTESA</b>
HOME	CAFETERIA	WAITING ROOM
MAISON	CAFETERIE	SALLE D'ATTENTE
CASA	CAFETERIA	SALA DE ESPERA















Destinazione/Location/Emplacement/Ubicación		
<b>SALA RIUNIONI</b>	<b>SALA CONFERENZA</b>	<b>BIBLIOTECA</b>
BOARDROOM	CONFERENCE ROOM	LIBRARY
SALLE DE REUNION	SALLE DE CONFERENCE	BIBLIOTHEQUE
SALA DE REUNIONES	SALA DE CONFERENCIAS	BIBLIOTECA





# JAMILA

## SEDIE E COLLETTIVITÀ

Destinazione/Location/Emplacement/Ubicación

**CAFFETTERIA**

CAFETERIA

CAFETERIE

CAFETERIA

**SALA RIUNIONI**

BOARDROOM

SALLE DE REUNION

SALA DE REUNIONES



ANTRACITE  
charcoal



AZZURRO  
light blue



BIANCO  
white



TORTORA  
taupe















**Destinazione/Location/Emplacement/Ubicación**

**SALA ATTESA**  
WAITING ROOM  
SALLE D'ATTENTE  
SALA DE ESPERA

**UFFICIO**  
OFFICE  
BUREAU  
OFICINAS

**BIBLIOTECA**  
LIBRARY  
BIBLIOTHEQUE  
BIBLIOTECA





# KAYLA

## SEDIE E COLLETTIVITÀ

Destinazione/Location/Emplacement/Ubicación

<b>CAFFETTERIA</b>	<b>BIBLIOTECA</b>	<b>SALA ATTESA</b>
CAFETERIA	LIBRARY	WAITING ROOM
CAFETERIE	BIBLIOTHEQUE	SALLE' D'ATTENTE
CAFETERIA	BIBLIOTECA	SALA DE ESPERA



BIANCO  
white



SABBIA  
sand

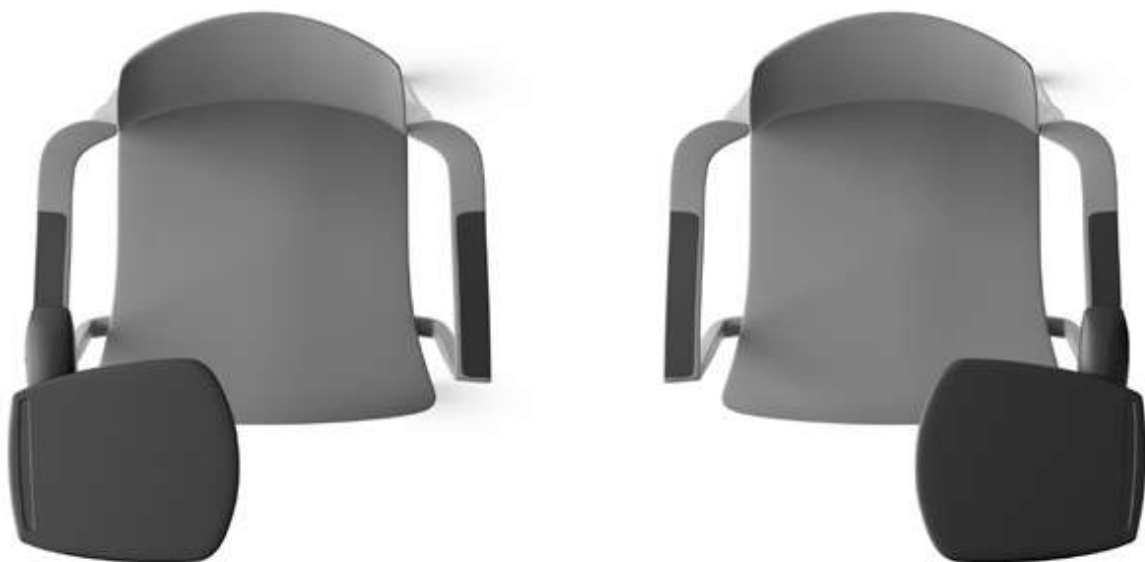


GRIGIO  
grey



NERO  
black







Destinazione/Location/Emplacement/Ubicación

<b>SALA RIUNIONI</b>	<b>SALA CONFERENZA</b>
BOARDROOM	CONFERENCE ROOM
SALLE DE REUNION	SALLE DE CONFERENCE
SALA DE REUNIONES	SALA DE CONFERENCIAS











# KUBIKA

## SEDIE E COLLETTIVITÀ

Destinazione/Location/Emplacement/Ubicación

<b>CAFFETTERIA</b>	<b>BIBLIOTECA</b>
CAFETERIA	LIBRARY
CAFETERIE	BIBLIOTHEQUE
CAFETERIA	BIBLIOTECA



NERO  
black



BIANCO  
white



VERDE  
green



TORTORA  
taupe









**Destinazione/Location/Emplacement/Ubicación**  
**SALA RIUNIONI**      **SALA ATTESA**  
BOARDROOM      WAITING ROOM  
SALLE DE REUNION      SALLE D'ATTENTE  
SALA DE REUNIONES      SALA DE ESPERA







# KLIC

## SEDIE E COLLETTIVITÀ

Destinazione/Location/Emplacement/Ubicación

<b>BIBLIOTECA</b>	<b>SALA RIUNIONI</b>
LIBRARY	BOARDROOM
BIBLIOTHEQUE	SALLE DE REUNION
BIBLIOTECA	SALA DE REUNIONES









Destinazione/Location/Emplacement/Ubicación

**SALA CONFERENZA**  
CONFERENCE ROOM  
SALLE DE CONFERENCE  
SALA DE CONFERENCIAS

**SALA ATTESA**  
WAITING ROOM  
SALLE D'ATTENTE  
SALA DE ESPERA







# TEOREMA

## SEDIE E COLLETTIVITÀ

Destinazione/Location/Emplacement/Ubicación

**BIBLIOTECA**  
LIBRARY  
BIBLIOTHEQUE  
BIBLIOTECA

**SALA RIUNIONI**  
BOARDROOM  
SALLE DE REUNION  
SALA DE REUNIONES



**NERO**  
black



**GRIGIO**  
grey



**BIANCO**  
white









Destinazione/Location/Emplacement/Ubicación

**SALA CONFERENZA**

CONFERENCE ROOM

SALLE DE CONFERENCE

SALA DE CONFERENCIAS

**SALA ATTESA**

WAITING ROOM

SALLE D'ATTENTE

SALA DE ESPERA









Destinazione/Location/Emplacement/Ubicación

<b>CASA</b>	<b>CAFFETTERIA</b>	<b>BIBLIOTECA</b>
HOME	CAFETERIA	LIBRARY
MAISON	CAFETERIE	BIBLIOTHEQUE
CASA	CAFETERIA	BIBLIOTECA

# SLIM

## SEDIE E COLLETTIVITÀ



Destinazione/Location/Emplacement/Ubicación

<b>SALA RIUNIONI</b>	<b>SALA ATTESA</b>
BOARDROOM	WAITING ROOM
SALLE DE REUNION	SALLE D'ATTENTE
SALA DE REUNIONES	SALA DE ESPERA









# PASSPORT

## SEDIE E COLLETTIVITÀ



Destinazione/Location/Emplacement/Ubicación

**SALA RIUNIONI**

BOARDROOM

SALLE DE REUNION

SALA DE REUNIONES

**SALA ATTESA**

WAITING ROOM

SALLE D'ATTENTE

SALA DE ESPERA

**UFFICIO**

OFFICE

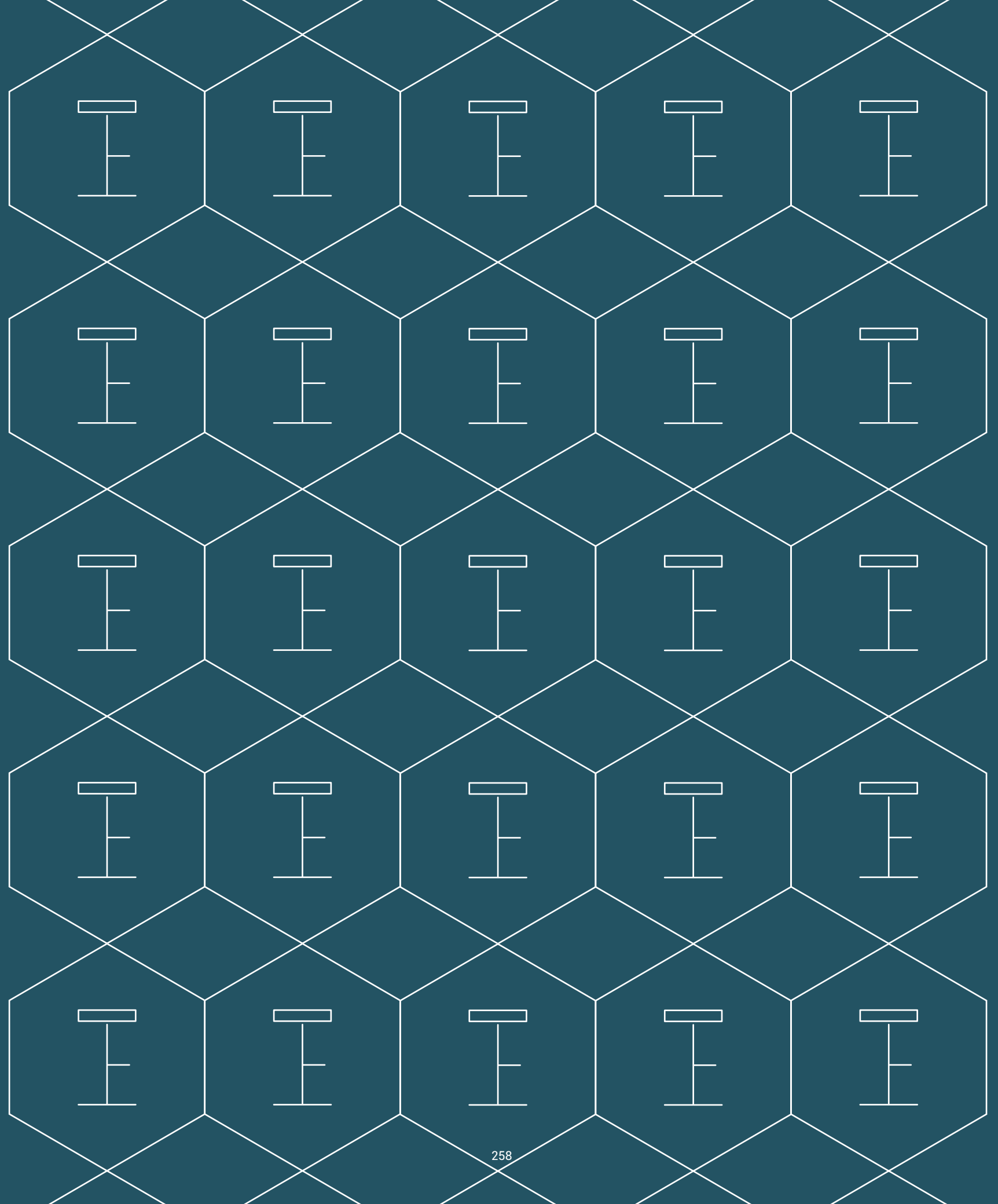
BUREAU

OFICINAS









# SGABELLI

STOOLS





# UPPER

## SGABELLI

DESIGN: NICOLA CACCO



Destinazione/Location

<b>CASA</b>	<b>CAFFETTERIA</b>	<b>UFFICIO</b>
HOME	CAFETERIA	OFFICE













Emplacement/Ubicación		
<b>MAISON</b>	<b>CAFETERIE</b>	<b>BUREAU</b>
CASA	CAFETERIA	OFICINAS









# HOST

SGABELLI

Destinazione/Location/Emplacement/Ubicación

<b>CASA</b>	<b>CAFFETTERIA</b>	<b>UFFICIO</b>
HOME	CAFETERIA	OFFICE
MAISON	CAFETERIE	BUREAU
CASA	CAFETERIA	OFICINAS



# CARPET

SGABELLI





# KUBIKA

SGABELLI







IKEBANA  
pag. 08-11 LP



DOMINO  
pag. 12-15 LP



ITACA  
pag. 16-17 LP  
ITACA  
ACOUSTIC  
pag. 18-19 LP



TRES  
pag. 20-23 LP



FORMAT  
pag. 24-27 LP



MANTRA  
pag. 28-31 LP



DEXTER  
pag. 32-33 LP



CUBE  
PLUS  
pag. 34-35 LP



ONDA  
pag. 36-37 LP



MONET  
pag. 38-39 LP



DAMATRÀ  
pag. 40-41 LP



HALL  
pag. 42-43 LP



**ROUND**  
pag. 44-45 LP



**BLITZ**  
pag. 46-47 LP



**MIMÌ**  
pag. 48-49 LP



**ZIP**  
pag. 50-51 LP



**TAVOLI**  
TABLES



pag. 54-57 LP



**METROPOLITAN**  
pag. 60-63 LP



**MAXIMA**  
pag. 64-67 LP



**HAIKU**  
pag. 68-69 LP  
**HAIKU WOOD**  
pag. 70-71 LP



**ADMIRAL**  
pag. 72-73 LP



**OMNIA**  
pag. 74-75 LP



**SHINE**  
pag. 76-79 LP



**SYNCRONET**  
pag. 80-81 LP



**TAIT**  
pag. 82-83 LP



**PROGRESS**  
pag. 84-85 LP



**SELECTA**  
pag. 86-87 LP



**SADIA**  
pag. 88-89 LP  
**SADIA PLUS**  
pag. 90-91 LP

# OPERATIVE TASK CHAIRS

LP = LISTINO PREZZI\_PRICE LIST



**MIRAI**

pag. 94-95 LP

**MIRAI WHITE**

pag. 96 LP

**MIRAI 24**

pag. 97 LP



**JEX**

pag. 98-99 LP



**PIPER**

pag.100-101 LP



**TECNA**

pag.102-105 LP



**KALISTA**

pag. 106-107 LP



# SEDIE E COLLETTIVITÀ GUEST AND STACKING CHAIRS

LP = LISTINO PREZZI\_PRICE LIST



**HOST**  
pag.110-111 LP



**CARPET**  
pag.112-113 LP  
**CARPET WOOD**  
pag.114-115 LP



**JAMILA**  
pag. 116-117 LP



**KAYLA**  
pag. 118-121 LP



**KUBIKA**  
pag. 122-123 LP



**KLIC**  
pag. 124-127 LP



**TEOREMA**  
pag. 128-133 LP



**SLIM**  
pag. 134-135 LP



**PASSPORT**  
pag. 136-137 LP



# SGABELLI STOOLS

LP = LISTINO PREZZI\_PRICE LIST



**UPPER**  
pag. 140-141 LP



**HOST**  
pag. 111 LP



**CARPET**  
pag. 113 LP  
**CARPET WOOD**  
pag. 115 LP



**KUBIKA**  
pag. 123 LP





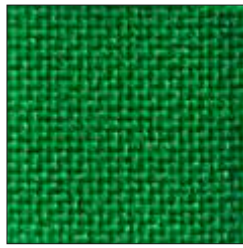
# RIVESTIMENTI

TEXTILES AND LEATHERS

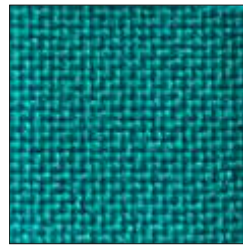




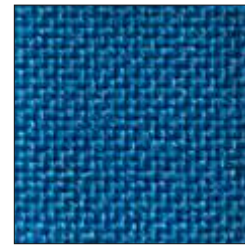
MD 515



MD 506



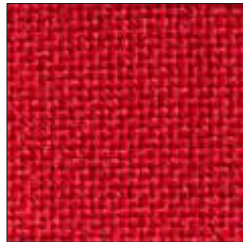
MD 509



MD 529



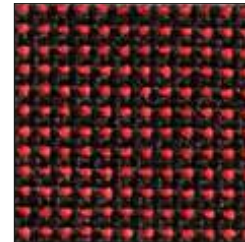
MD 510



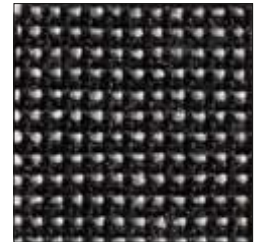
MD 502



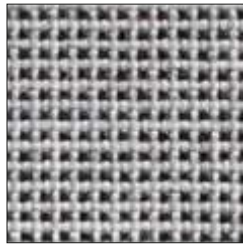
MD 530



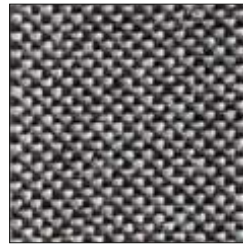
MD 520



MD 518



MD 522



MD 519



MD 514



MD 511

CATEGORIA 1 **COVE**



C 1



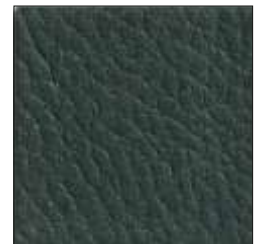
C 21



C 301



C 336



C 196



C 238



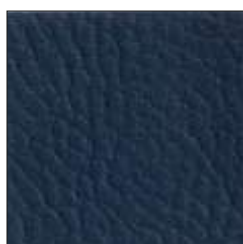
C 371



C 441



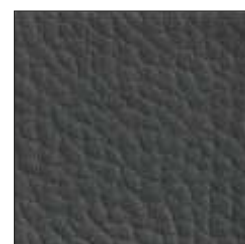
C 413



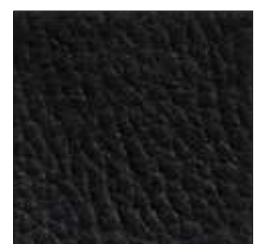
C 539



C 84




C 98



C 560

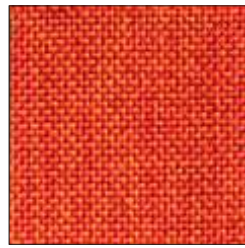


# CATEGORIA 2 ANGEL

ignifugo classe 1IM  
fire proof class 1IM 



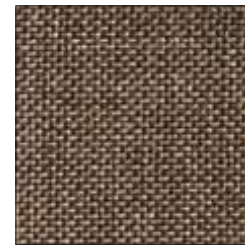
AN 38



AN 30



AN 35



AN 45



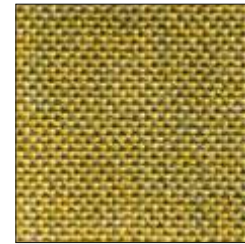
AN 20



AN 53



AN 50



AN 41



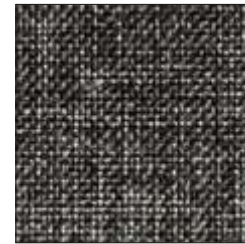
AN 09



AN 55



AN 39




AN 56



AN 57

# CATEGORIA 2 KING-L



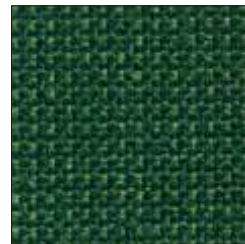
ignifugo classe 1IM  
fire proof class 1IM 



KL 8508



KL 7041



KL 7936



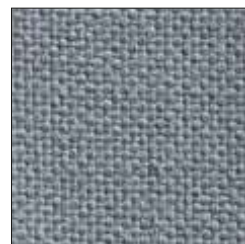
KL 3520



KL 4030



KL 1030



KL 8014



KL 4027



KL 4017



KL 7026



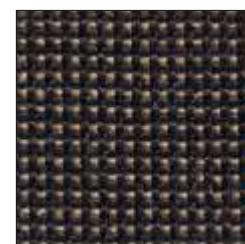
KL 6043



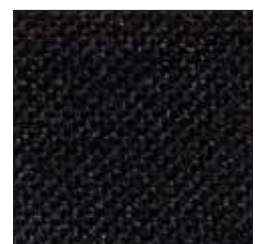
KL 6517



KL 6080




KL 8511



KL 8033



# CATEGORIA 2 **GAZEBO**

ignifugo classe 1IM  
fire proof class 1IM 



S 4979



S 6



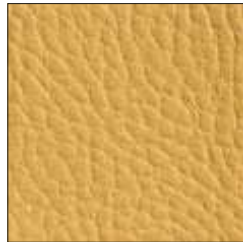
S 151



S 1194



S 1307



S 71



S 792



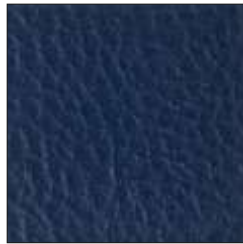
S 680



S 726



S 1809



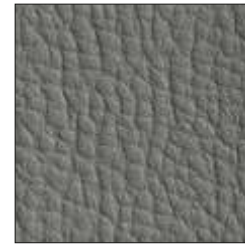
S 4947



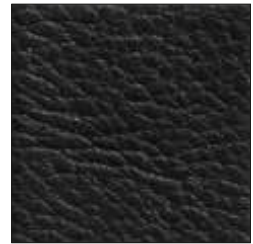
S 6985



S 4009




S 1955



S 991

# CATEGORIA 2 **KING-FLEX**



ignifugo classe 1IM  
fire proof class 1IM 



KF 1006



KF 4030



KF 4066



KF 4008



KF 4020



KF 8027



KF 3083



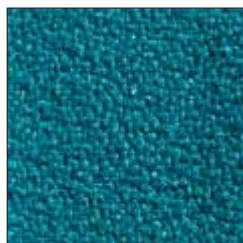
KF 3030



KF 7013



KF 6026



KF 7023



KF 6007



KF 8009




KF 9228



KF 8033



# CATEGORIA 3 **SECRET**

ignifugo classe 1IM  
fire proof class 1IM 



SC 1013



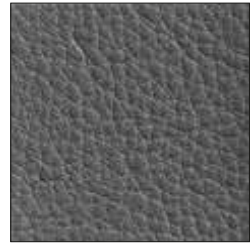
SC 1002



SC 1008



SC 1011



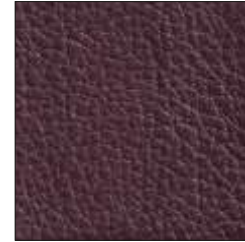
SC 1024



SC 1007



SC 1005



SC 1020



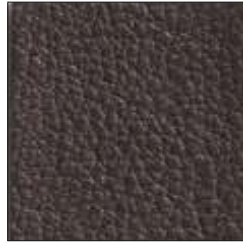
SC 1009



SC 1018



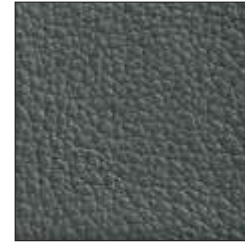
SC 1021



SC 1006



SC 1015




SC 1012



SC 1017

# CATEGORIA 3 **MINI**



ignifugo classe 1IM  
fire proof class 1IM 



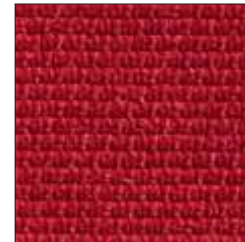
MN 6524



MN 4030



MN 4530



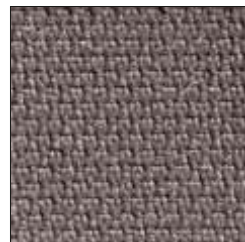
MN 4028



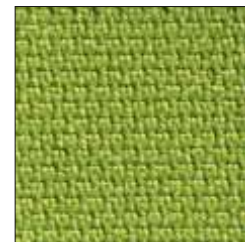
MN 4528



MN 3008



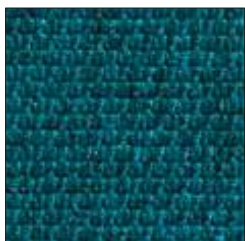
MN 1020



MN 7022



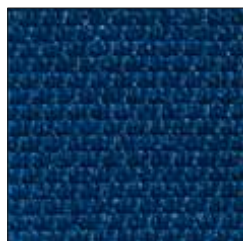
MN 7509



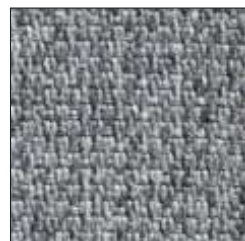
MN 6502



MN 6504



MN 6015



MN 1510




MN 1520

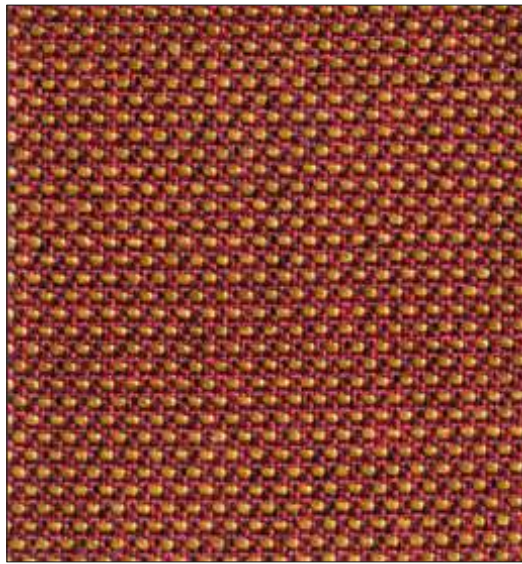


MN 8033

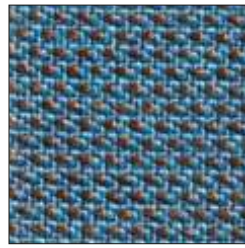


# CATEGORIA 3 ANGEL TRIK

ignifugo classe 1IM  
fire proof class 1IM 



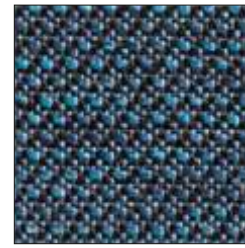
AK 301



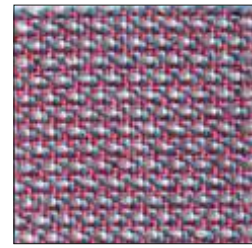
AK 704



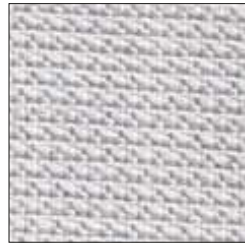
AK 701



AK 702



AK 703



AK 101



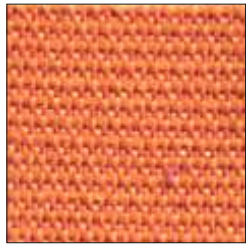
AK 402



AK 400



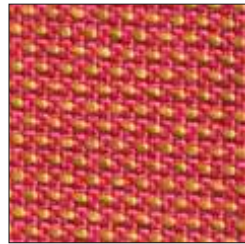
AK 803



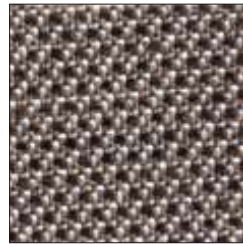
AK 307



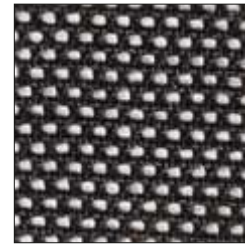
AK 302



AK 304



AK 602




AK 221



AK 405

# CATEGORIA 5 PELLE/LEATHER

pelle vera  
genuine leather 



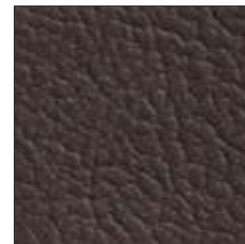
P 1



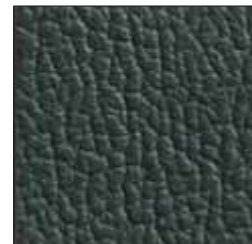
P 21



P 301



P 336



P 196



P 238



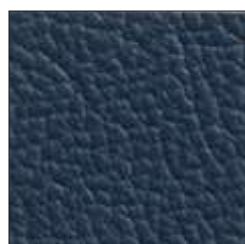
P 371



P 441



P 413



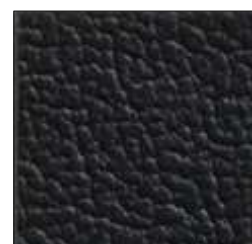
P 539



P 84



P 98



P 560



# CATEGORIA 1

## MADRID

± 230 g/mq  
 100% PP polipropilene F.R.  
 100% PP Polypropylene F.R.  
 80.000 cicli martindale  
 80.000 martindale cycles  
 ignifugo classe 11M  
 fire proof class 11M

## COVE

± 565 g/mq  
 82% PVC - 7% Cotone  
 11% Poliestere  
 82% PVC - 7% Cotton  
 11% Polyester  
 50.000 cicli martindale  
 50.000 martindale cycles

# CATEGORIA 2

## ANGEL

± 228 g/mq  
 100% polipropilene F.R.  
 100% polypropylene F.R.  
 100.000 cicli martindale  
 100.000 martindale cycles  
 ignifugo classe 11M / fire proof class 11M  
 idrorepellente, antistatico, anallergico,  
 antibatterico, irstringibile / water repellent,  
 antistatic, hypoallergenic, antibacterial, no-shrink

## GAZEBO

± 640 g/mq  
 87,5% Polivinilcloruro plastificato - 12,5% Cotone  
 87,5% Plasticized polyvinylchloride - 12,5% Cotton  
 50.000 cicli martindale / 50.000 martindale cycles  
 ignifugo classe 11M / fire proof class 11M

## KING-L

± 260 g/mq  
 100% poliestere Trevira CS  
 100% Polyester Trevira CS  
 70.000 cicli martindale  
 70.000 martindale cycles  
 ignifugo classe 11M  
 fire proof class 11M

## KING-FLEX

± 300 g/mq  
 100% poliestere Trevira CS  
 100% Polyester Trevira CS  
 100.000 cicli martindale  
 100.000 martindale cycles  
 ignifugo classe 11M  
 fire proof class 11M

# CATEGORIA 3

## SECRET

± 540 g/mq  
 76% PVC - 2% PU - 22% PES  
 76% PVC - 2% PU - 22% PES  
 60.000 cicli martindale  
 60.000 martindale cycles  
 ignifugo classe 11M  
 fire proof class 11M  
 Impermeabile/resistente ai  
 raggi UV/adatto per esterno/  
 waterproof /UV rays resistant/  
 suitable for outdoor

## MINI

± 340 g/mq  
 100% poliestere Trevira CS  
 100% Polyester Trevira CS  
 100.000 cicli martindale  
 100.000 martindale cycles  
 ignifugo classe 11M  
 fire proof class 11M

## ANGEL TRICK

± 350 g/mq  
 100% PP FR (nativa) / 100% PP FR (native)  
 50.000 cicli martindale / 50.000 martindale cycles  
 ignifugo classe 11M  
 fire proof class 11M  
 idrorepellente, antistatico, anallergico, antibatterico,  
 irstringibile / water repellent, antistatic,  
 hypoallergenic, antibacterial, no-shrink

# CATEGORIA 5

## PELLE - LEATHER

100% pelle smerigliata  
 100% buffed leather

# RETE MESH

Composizione:

100% poliestere - martindale: 25.000 cicli

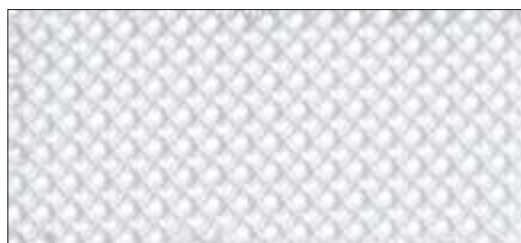
Composition:

100% polyester - martindale: 25.000 cycles

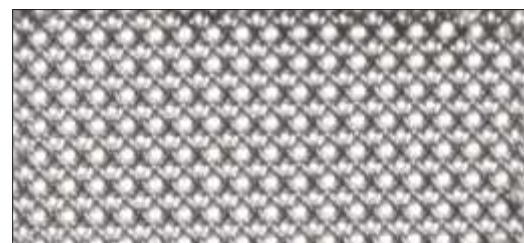
Su richiesta: RETE NERA M10 disponibile  
 in versione ignifuga (M10 FR)

Upon request: BLACK MESH M10 is also

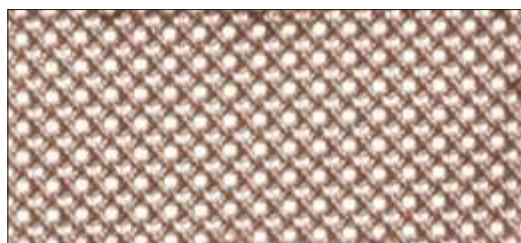
available with fire proof treatment (M10 FR)



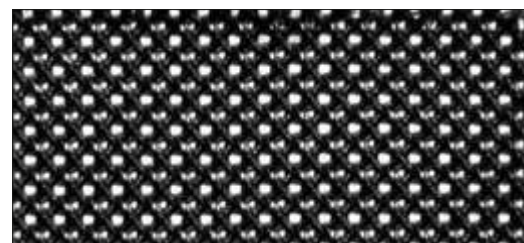
M 2



M 3



M 4



M 10

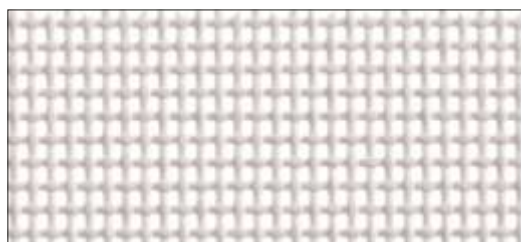
Disponibile solo per modello Synchronet  
 Available for Synchronet model only

Composizione: 70% polivinile-30% PES  
 martindale: 100.000 cicli

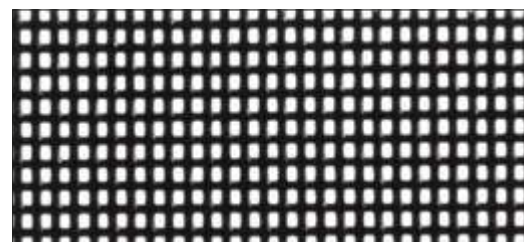
Composition:

70% polyvinyl-30%PES

martindale: 100.000 cycles




M 200



M 100

# CATEGORIA 6 **MAGNUM**

ignifugo classe 1IM  
fire proof class 1IM 



MG 001



MG 703



MG 701



MG 901



MG 900



MG 902



MG 315



MG 503



MG 802



MG 100



MG 401



MG 407



MG 606




MG 603



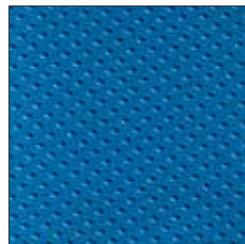
MG 602

# CATEGORIA 6 **MAGNUM DOT**

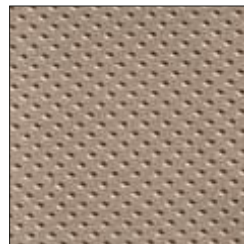
ignifugo classe 1IM  
fire proof class 1IM 



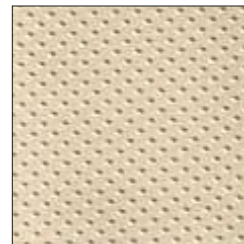
DT 111



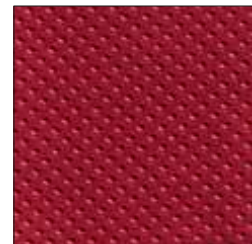
DT 707



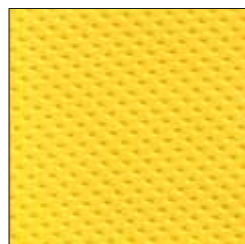
DT 400



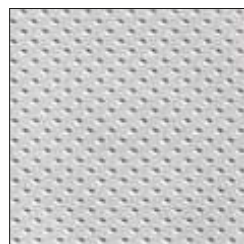
DT 101



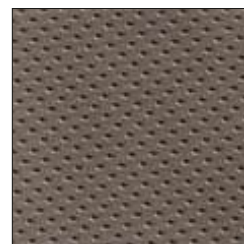
DT 304



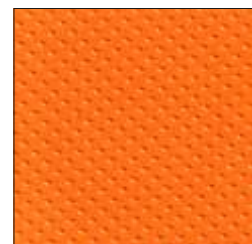
DT 500



DT 105



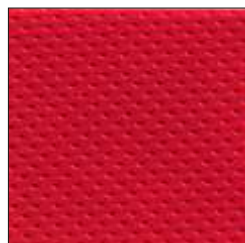
DT 406



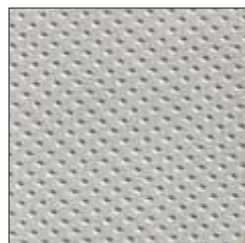
DT 307



DT 405



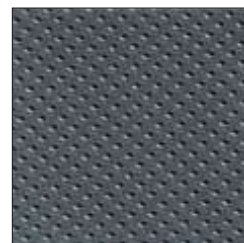
DT 300



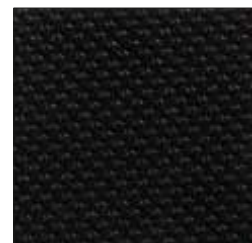
DT 600



DT 808



DT 601



DT 200





NW 127



NW 120



NW 134



NW 101



NW 143



NW 133



NW 124



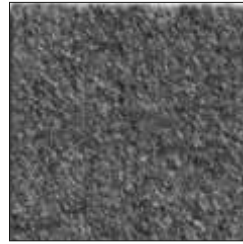
NW 111



NW 106



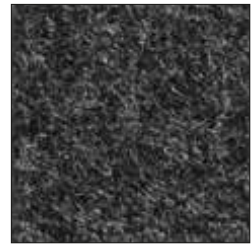
NW 131



NW 103

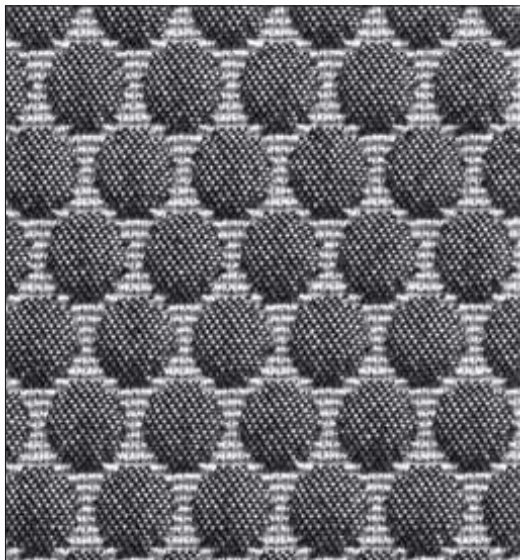


NW 105



NW 112

CATEGORIA 6 **BUBBLE**



BB 12



BB 02



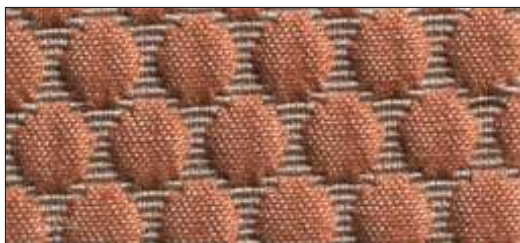
BB 08



BB 10



BB 06



BB 03



BB 07



BB 11





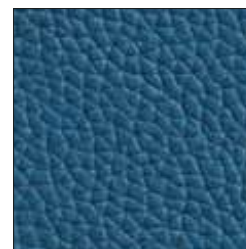
PN 5402



PN 5000



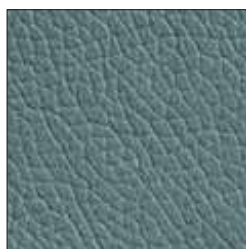
PN 5360



PN 5230



PN 5320



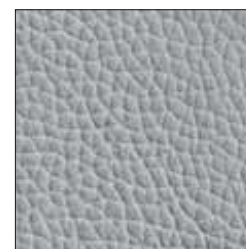
PN 5418



PN 5508



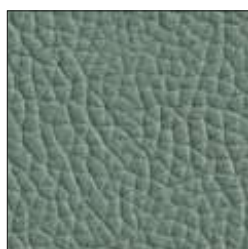
PN 5200



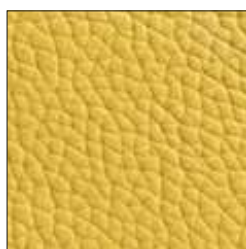
PN 5420



PN 5524



PN 5120



PN 5430



PN 5470



PN 5110



PN 5300

## ON DEMAND

**Disponibili a richiesta**  
**Available on demand**

- **CAMIRA:**
  - ERA
  - HONEYCOMB
  - TRAIL

**camira**  
style with substance

- **KVADRAT:**
  - REMIX 2
  - UMAMI

**MAGNUM**

± 715 g/mq  
 88% PVC - 7% PL - 4% CO - 1% PU  
 88% PVC - 7% PL - 4% CO - 1% PU  
 200.000 cicli martindale  
 200.000 martindale cycles  
 ignifugo classe 1IM / fire proof class 1IM  
 antibatterico, anallergico, atossico  
 antibacterial, hypoallergenic, atoxic

**MAGNUM DOT**

± 715 g/mq  
 88% PVC - 7% PL - 4% CO - 1% PU  
 88% PVC - 7% PL - 4% CO - 1% PU  
 80.000 cicli martindale  
 80.000 martindale cycles  
 ignifugo classe 1IM / fire proof class 1IM  
 antibatterico, anallergico, atossico  
 antibacterial, hypoallergenic, atoxic

**LANA/WOOL**

± 410 g/mq  
 pura lana vergine  
 pure new wool.  
 50.000 cicli martindale  
 50.000 martindale cycles  
 100% tessuto riciclabile  
 100% recyclable fabric  
 ignifugo classe 1IM  
 fire proof class 1IMM

**BUBBLE**

± 420 g/mq  
 100% PES FR  
 100% PES FR  
 35.000 cicli martindale  
 35.000 martindale cycles  
 ignifugo classe 1IM  
 fire proof class 1IM

**PELLE PANAMA**

100% pelle fiore corretto  
 100% corrected grain leather  
 1,0 - 1,2 mm spessore  
 1,0 - 1,2 mm thickness  
 50.000 cicli - resistenza alla flessione  
 50.000 cycles - flex resistance  
 su richiesta disponibile trattamento di resistenza alla fiamma  
 flame-resistance treatment available upon request

## ON DEMAND

**ERA**

± 320 g/mq  
 100% Poliestere  
 100% Polyester  
 100.000 cicli martindale  
 100.000 martindale cycles  
 ignifugo / fire proof

**HONEYCOMB**

± 280 g/mq  
 100% Poliestere riciclato  
 100% Recycled polyester  
 50.000 cicli martindale  
 50.000 martindale cycles  
 ignifugo / fire proof

**TRAIL**

± 540 g/mq  
 100% Trevira CS  
 100% Trevira CS  
 80.000 cicli martindale  
 80.000 martindale cycles  
 ignifugo / fire proof

**REMIX 2**

± 300 g/mq  
 90 % Lana 10% Nylon  
 90% Wool - 10% Nylon  
 100.000 cicli martindale  
 100.000 martindale cycles  
 ignifugo / fire proof

**UMAMI**

± 300 g/mq  
 90 % Lana 10% Nylon  
 90% Wool - 10% Nylon  
 80.000 cicli martindale  
 80.000 martindale cycles  
 ignifugo / fire proof









